

Environmental Report 2025

PT Sumi Rubber Indonesia





SURINDO WAY

INTEGRITY & SOUNDNESS

- Integrity & Soundness (Compliance) (Safety First) (Environment Awareness)
- Customer First
- 2G
- Scientific Approach
- Continuous Improvement

COMMUNICATION

- Inter-personal Concern
- Face to Face Communication
- Horenso
 - Reporting
 - Information
 - Discussion

DEDICATION TO LONG TERM GOAL

- Break the status quo with critical thinking
- Benchmarking

PERSONAL DEVELOPMENT

- On the Job Training
- Accomplish goals through teamwork



THE SRI WAY

Let's make "SURINDO WAY" as the basic
Phylosophy at our Company

Contents :

I. Company Profile.....	4
II. Company Policy.....	5
III. Environmental Policy.....	6
IV. Structure of Organization.....	7
V. Certificate of ISO 14001:2015.....	8
VI. Environmental Programs and Activities :.....	9
1. Perfect Zero Emission Programs.....	10
2. Monitoring and Measuring.....	11
3. Energy Saving.....	12
4. CO ₂ Reduction.....	13
5. Industrial Waste Reduction.....	14
6. Naphtha Reduction.....	15
7. Water Usage Reduction.....	16
8. Environmental Audit and Inspection.....	17
9. CSR Activities.....	18
10. Other Activities.....	20
VII. Awards and Certificates.....	21

I. Company Profile

Status : Foreign Capital Investment

Capital Share : 72.5 % Sumitomo Rubber Industries Ltd
10.0 % Sumitomo Electric Industries Ltd
10.0 % IMG Sejahtera Langgeng
5.0 % Indomobil Sukses Internasional Tbk
2.5 % Sumitomo Corporation

Area Business : Manufacturing & Sales for Tire & Golf Ball

Market : - Tire for Export 55 %
- Domestic 45 % (OE = 15 %, Replacement = 30 %)
- Golf Ball for Export 100 %

Number of Employees : 3,244 (Dec 2024)

Office : Wisma Indomobil , 12th Floor
Jl. MT Haryono Kav.8
East Jakarta – Indonesia
021 – 851 2561

Factory : Kota Bukit Indah Blok H Sektor I A
Indotaisei Industrial Estate
Cikampek, Kab. Karawang,
West Java - Indonesia
0264 – 351 346, 351 347

II. Company Policy

1. LET'S MAINTAIN SAFETY IN THE WORK AREA AND
INCREASE THE ABILITIES AND KNOWLEDGE OF EACH
INDIVIDUAL
2. "BE THE TRANSFORMER"
LET'S MAKE MORE CHANGE HAPPEN
3. LET'S ACHIEVE THE GOAL WITH "OPTIMAL DECISION
MAKING" AS THE WHOLE

JANUARY 2025



TAKAHIKO SHIOMI

III. Environmental Policy

PT Sumi Rubber Indonesia as a manufacturer of tire and golf ball is determined to create, preserve and protect a clean and healthy environment by continuously controlling and preventing environmental impact.

To realize the above determination, PT Sumi Rubber Indonesia has established the following environmental policy :

1. Comply with government and environmental regulation as stated in PROPER (Company performance ratings assessment program in environmental management).
2. Determine goals and objectives in the environmental sector and review periodically.
3. Maintain global multi-site ISO 14001:2015 certification and increase understanding and awareness of all employees, contractor workers, suppliers and visitors regarding environmental activities in accordance with ISO 14001:2015.
4. Reducing the index of energy, water and hazardous material resource use with environmental friendly materials, reducing waste, reducing CO₂ emission toward carbon neutral as adaption to climate change and protection of biodiversity and ecosystem.
5. Carry out continuous improvement to the environmental management system to improve environmental performance.
6. Carry out CSR activities by contributing to the surrounding community.
7. As part of SRI-G, SURINDO will follow SRI-G policy.

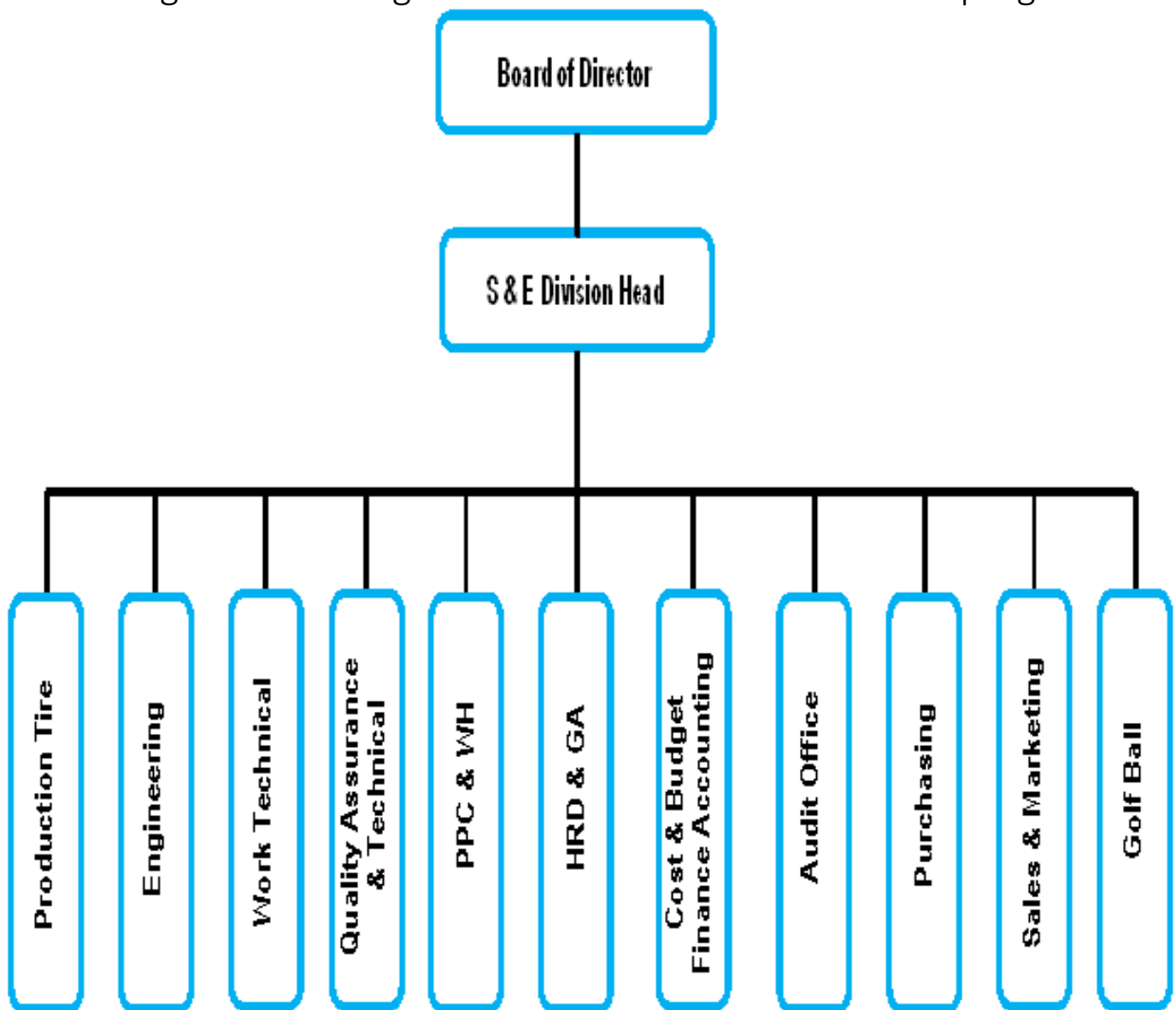
The environmental was create to be obeyed and implemented by all employees, contractor workers, suppliers and visitors who come to PT Sumi Rubber Indonesia.

January 2025

TAKAHIKO SHIOMI

IV. Structure of Organization

Environment Committee has responsibility to report environmental activities to the President Director as a Committee Chairman. Coordinator and sub coordinator implement the programs and get suggestion from advisor. Environment Committee have representative in each department, which have responsibility to control the implementation of environmental progress in this area. This organization structure shows that the management has high commitment of environmental programs.



V. Certificate of ISO 14001:2015

As a manifestation of our commitment in keeping the environment aspect in good condition. We have implemented the Environmental Management System (EMS) consistently and we have obtained the certificate of ISO 14001 since 2003, and since 2016 already obtained ISO 14001 version 2015.

	Current issue date: Expiry date: Certificate identity number:	5 December 2022 4 December 2025 10482133	Original approval(s): ISO 14001 - 5 December 2007
<hr/>			
<h1>Certificate of Approval</h1>			
<p>This is to certify that the Management System of:</p> <h2>Sumitomo Rubber Group</h2>			
<p>PT. Sumi Rubber Indonesia Bukit Indah City, Blok H Sektor 1A, Indotaisei Industrial estate, Cikampek, Kab. Karawang, 41373, Jawa Barat Indonesia</p>			
<p>has been approved by LRQA to the following standards:</p> <p>ISO 14001:2015 JIS Q 14001:2015</p>			
<p>Approval number(s): ISO 14001 – 0077120-019</p>			
<p>This certificate forms part of the approval identified by approval number: 0077120</p>			
<p>The scope of this approval is applicable to: Manufacture of pneumatic tires (passenger car, ultra light truck, light truck, truck, bus, temporary, and motor cycle) and golf balls.</p>			
			
<p>Yasushi Horikawa</p> <hr/>			
<p>Japan Operations Manager</p>			
<p>Issued by: LRQA Limited</p>			
			
<hr/>			
<small>LRQA Group Limited, its affiliates and subsidiaries and their respective officers, employees or agents are, individually and collectively, referred to in this clause as 'LRQA'. LRQA assumes no responsibility and shall not be liable to any person for any loss, damage or expense caused by reliance on the information or advice in this document or howsoever provided, unless that person has signed a contract with the relevant LRQA entity for the provision of this information or advice and in that case any responsibility or liability is exclusively on the terms and conditions set out in that contract. Issued by: LRQA Limited, 1 Trinity Park, Bickenhill Lane, Birmingham B37 7ES, United Kingdom</small>			
<small>Page 1 of 1</small>			

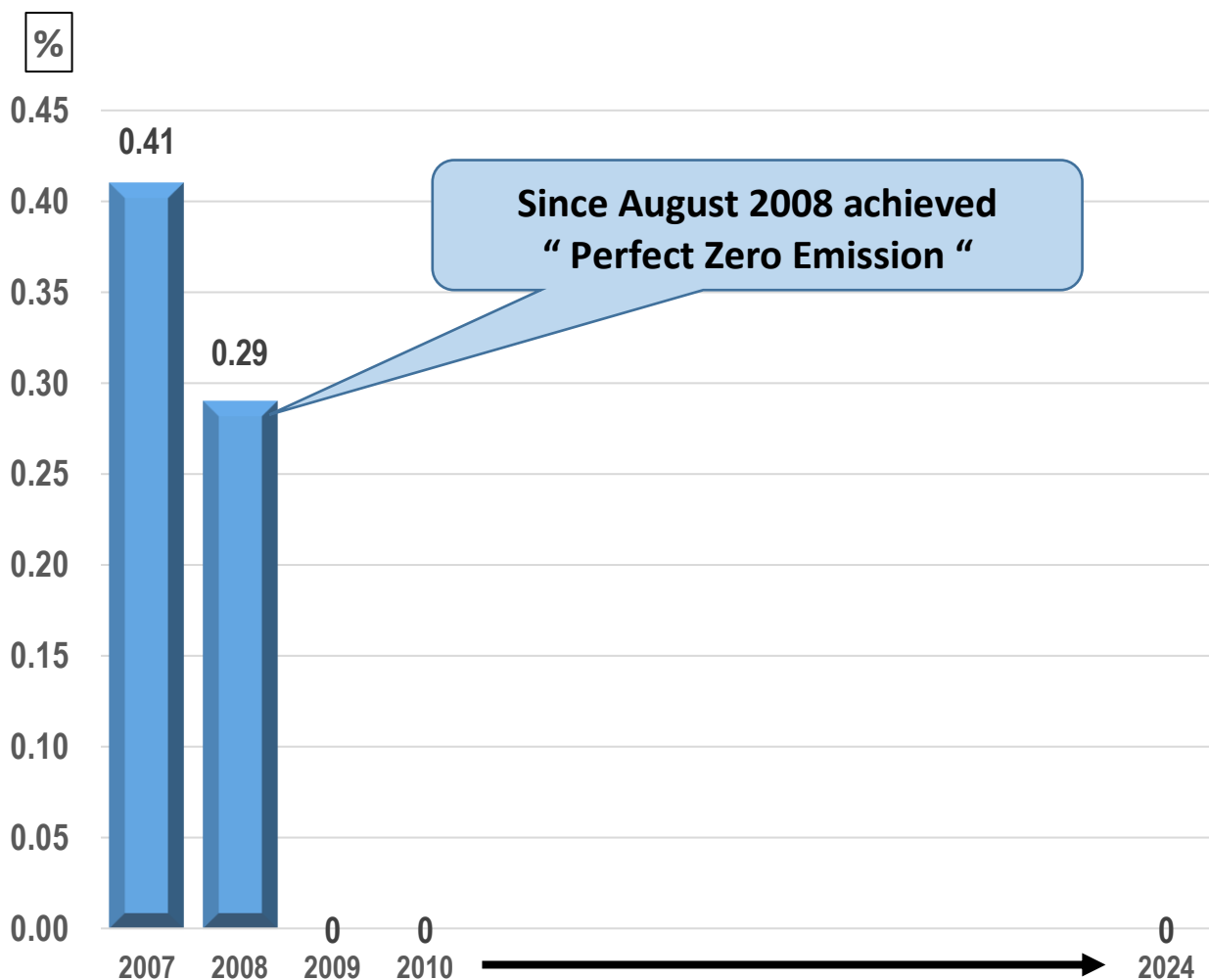
VI. Environmental Programs and Activities

PT Sumi Rubber Indonesia always do some programs & activities related to clean and healthy in working area & community area. Environmental programs are implemented through following activities :

1. Perfect Zero Emission Programs
2. Monitoring and Measuring
3. Energy Saving
4. CO₂ Reduction
5. Industrial Waste Reduction
6. Naphtha Reduction
7. Water Usage Reduction
8. Environmental Audit and Inspection
9. CSR Activities
10. Other Activities

VI.1. Perfect Zero Emission Programs

Perfect Zero Emission is the activity by involve all employees to prevent waste of company to pollute the environmental surrounding. Perfect Zero Emission means that all effect to control and monitor waste which didn't have effect land field and has achieved excellent until index zero and already achieved Perfect Zero Emission since August 2008.



Note : Percentage indicates the ratio of hazardous waste to total factory waste

VI.2. Monitoring and Measuring

Objectives of monitoring and measuring activities are as follow :

1. Provide friendly environmental condition for employees based on the existing regulation from government.
2. Anticipate and prevent any kind of condition which have potential to may give bad impact to the employees.
3. Fulfil the requirement of environmental regulation or condition that applied from the government and continue up to date with the newest regulation.

Monitoring and measuring aspect are as follow :

- a. Measuring emission of plant chimney
- b. Measuring of noise level
- c. Measuring of water pollution
- d. Measuring of air ambient
- e. Measuring emission of factory vehicle
(forklift and company car)

ENVIRONMENT SITE DATA YEAR 2024

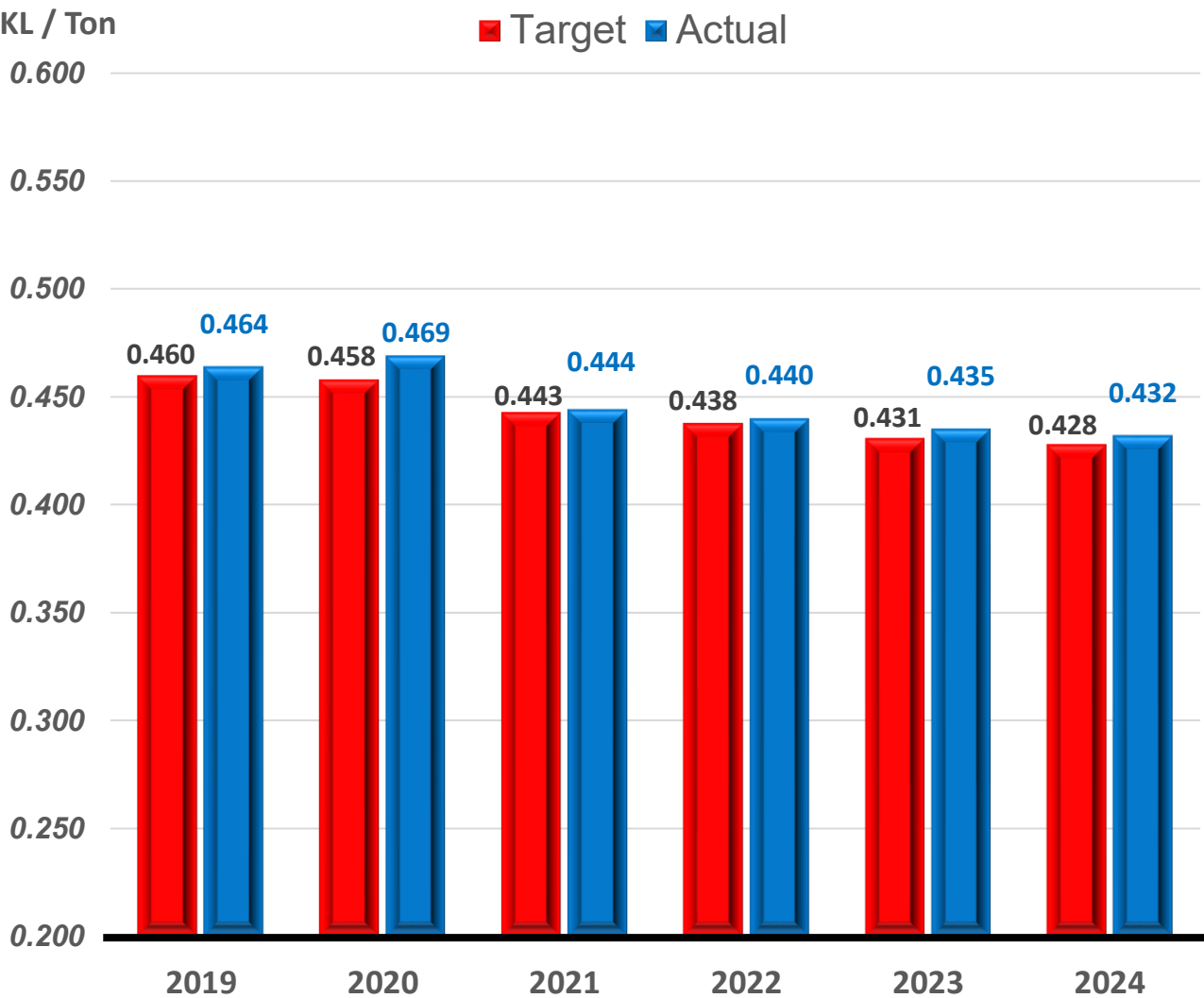
ITEM			STD	Min	Max	Avg.	REMARK
Discharge to Air	SO _x at Boiler	mg/m ³	150	< 2.61	2.61	2.61	OK
	NO _x at Boiler	mg/m ³	650	1.88	5.64	2.82	OK
to Water	BOD	mg/L	300	18	122	32	OK
	SS	mg/L	200	36	164	110	OK
	PH	-	6 ~ 9	7.1	8.2	7.7	OK

VI.3. Energy Saving

The 2024 energy index is better than the previous year, but it's still not achieve target due to several factors such as production volume is 95 % compare to the previous year, energy loss from equipment whose efficiency has decreased and others.

In 2025, energy saving plan of electric & steam as follows :

- Renewal header pipe & insulation of curing machines
- Improve air leakages/improve air compressor
- Renewal motor to IE-3 / energy saving type, etc.

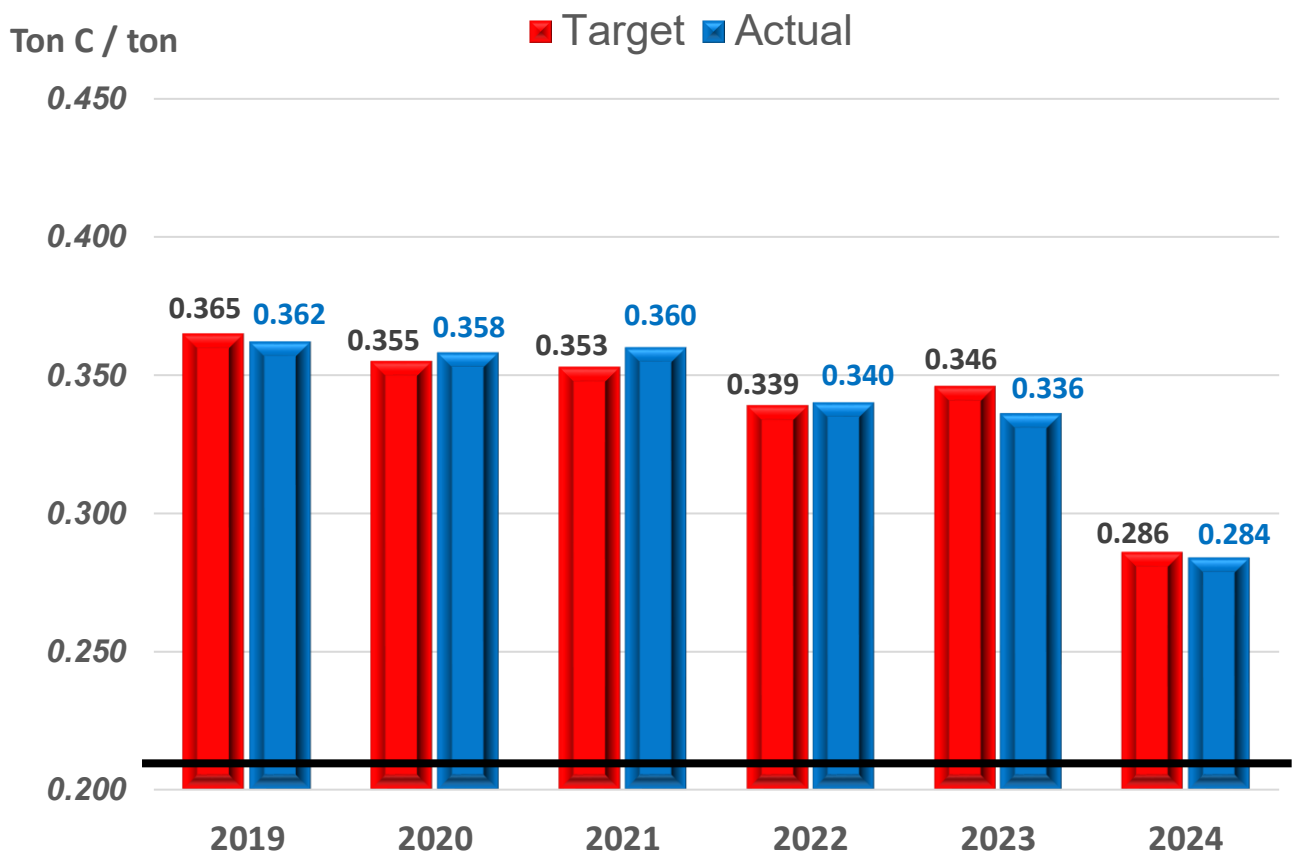


VI.4. CO₂ Reduction

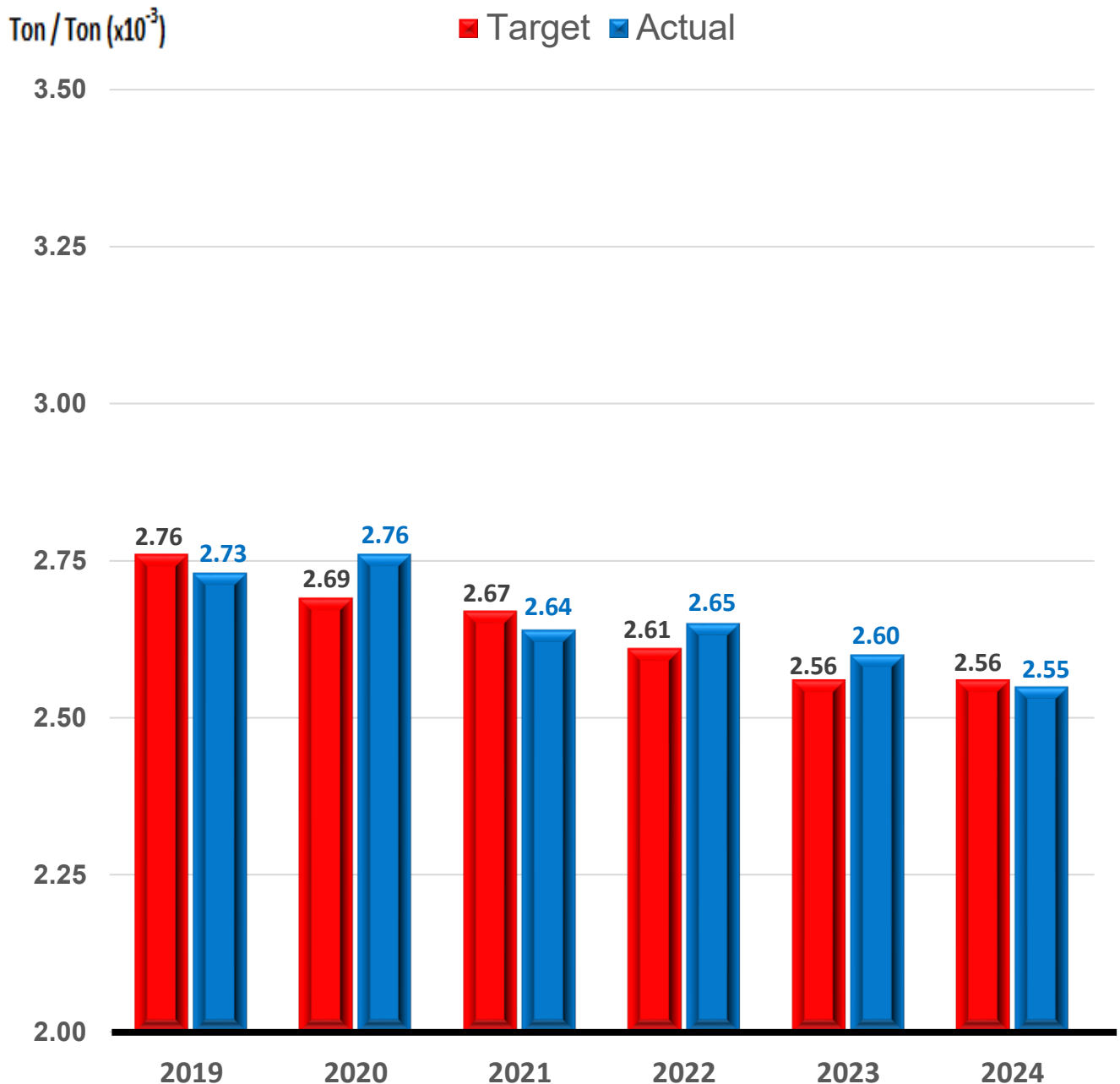
Since the middle of 2023, SURINDO has used 30% renewable electric energy (REC) from government companies, and since February 2024 has installed solar panel which produce 3% of electrical energy consumption.



Solar Panels of Energy source

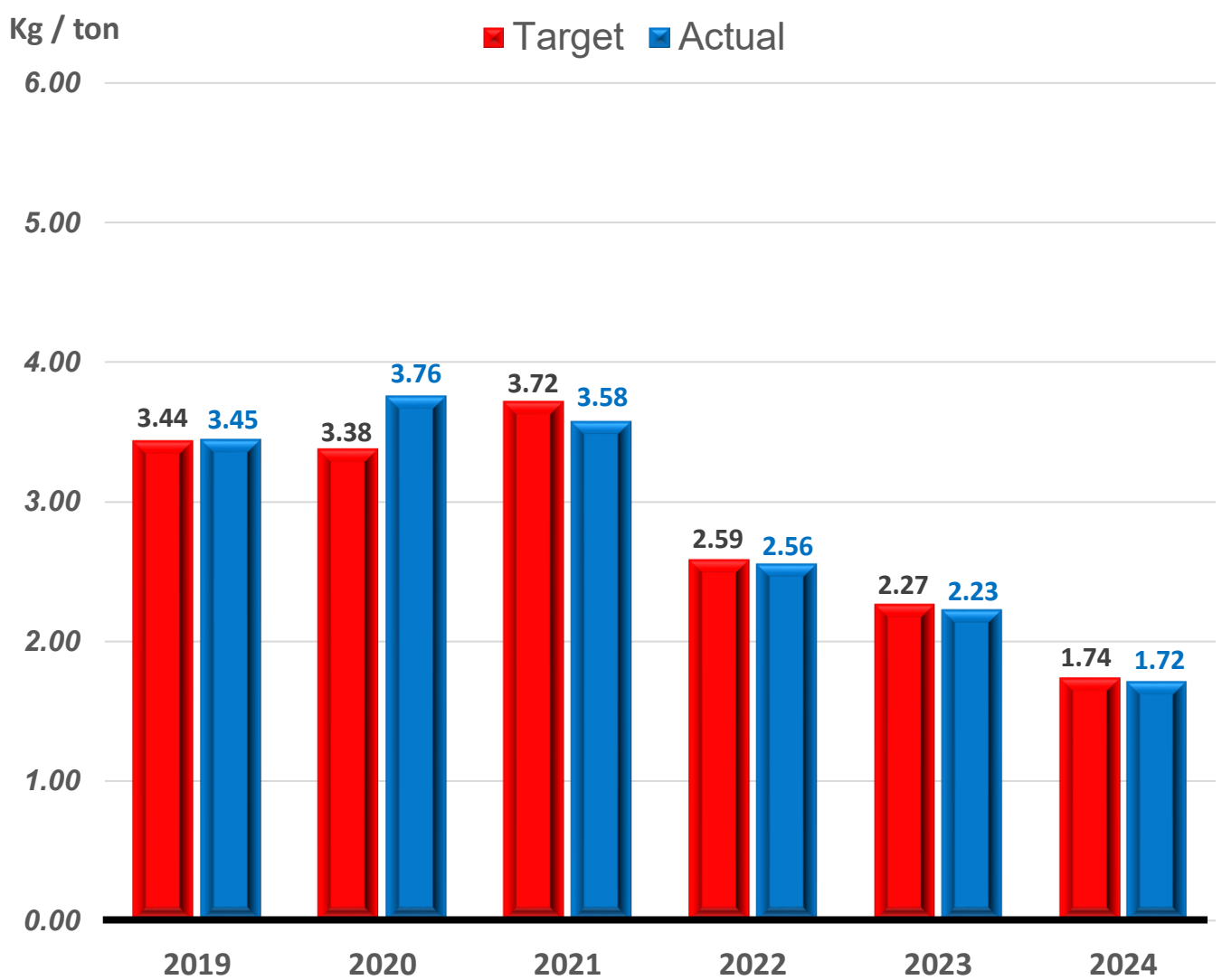


We have activities to reduce industrial waste such as recycle waste in the waste disposal management system. We separate waste by category and it is very effective.



VI.6. Naphtha Reduction

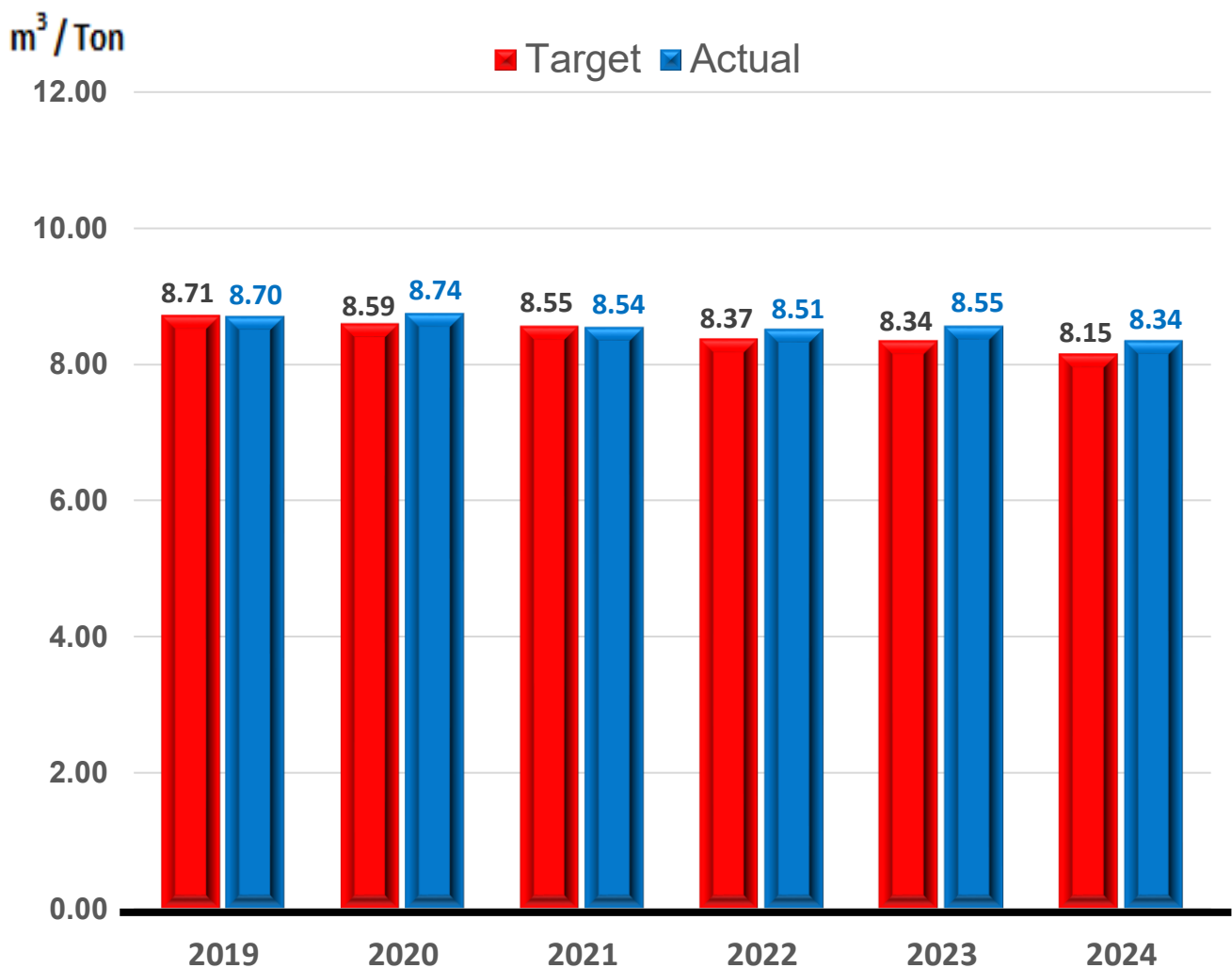
In the tire manufacturing process, we use naphtha (organic solvent), for solution process and tire cleaning, but also we continue to reduce naphtha consumption, reduction target 1.5%



VI.7. Water Usage Reduction

In 2025, There are several improvements that will be made as follows

- Reduce water leakage in CWS line
- Reduce water leakage of hydraulic water curing
- Reduce cooling water to primary area



VI.8. Environmental Audit and Inspection

Annual Audit by Lloyds Register (ISO 14001:2015)



To ensure that PT Sumi Rubber Indonesia complies with government regulations on the environment, an audit is carried out every year by LRQA, and the results until now SURINDO has always complied with existing environmental regulations.

VI.9. CSR Activities

A.Fogging



We have continue fogging since 2012, this activity routine almost every week due to the many request from employees for prevention of dengue fever.

During 2024, Fogging have been carried out 67 times in several employee residential areas.

B.Blood Donation



Purpose :

Helping PMI (local Red Cross Organization) to increase the need for blood stock in collaborations with hospitals. In 2024, the need for blood transfusions for patients in hospitals is still high.

To increase participation from employees, we provide souvenirs for donors.

In 2024, blood donations were carried out every month with a total of donors 480 employee.

VI.10. Others Activities

DONATION

- ❖ Donation “qurban” 4 goats and 1 cow in Idul Adha (Moslem day) to the village of Dawuan Barat, Kalihurip and Pemda Karawang



- ❖ Donation “Sembako” (basic food) in Idul Fitri 2024 (Moslem day) for society



- ❖ Donation of materials for renovation of Mosque at Kalihurip village around factory



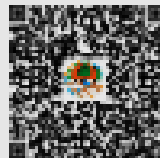
VII. Awards and Certificates

PT Sumi Rubber Indonesia received PROPER award 2024²⁰ (Rating of the company's performance in environmental



**HASIL EVALUASI KINERJA PENGELOLAAN LINGKUNGAN
PROPER 2023 - 2024**

NAMA PERUSAHAAN : PT. Sani Rubber Indonesia
JENIS INDUSTRI : Gamoli
LOKASI KEGIATAN : KAWASAN INDUSTRI INDOTASEI, BLOK H SEKTOR 1A
CIKAMPEK, KARAWANG
PERINGKAT : BIRU
QR-CODE :



SCAN LINK MEMERIKSA KEBERHASILAN

**KEMENTERIAN LINGKUNGAN HIDUP DAN KEHUTANAN
2024**



Yan Uripandra
yan@dunlop.co.id

Zuhendri
zuhendri@dunlop.co.id

