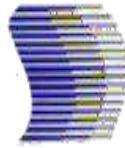


# Environmental Report 2024

PT SUMI RUBBER INDONESIA





# SURINDO WAY

## INTEGRITY & SOUNDNESS

- Integrity & Soundness (Compliance) (Safety First) (Environment Awareness )
- Customer First
- 2G
- Scientific Approach
- Continuous Improvement

## COMMUNICATION

- Inter-personal Concern
- Face to Face Communication
- Horenso
  - Reporting
  - Information
  - Discussion

## DEDICATION TO LONG TERM GOAL

- Break the status quo with critical thinking
- Benchmarking

## PERSONAL DEVELOPMENT

- On the Job Training
- Accomplish goals through teamwork



## THE SRI WAY

Let's make "SURINDO WAY" as the basic  
Phylosophy at our Company

# Contents

- I. Company Profile ..... 4
- II. Company Policy ..... 5
- III. Environmental Policy.....6
- IV. Structure of Organization ..... 7
- V. Certificate of ISO 14001 : 2015 .....8
- VI. Environmental Programs and Activities ..... 9
  - 1. Perfect Zero Emission Programs..... 10
  - 2. Monitoring and Measuring ..... 11
  - 3. Energy Saving ..... 12
  - 4. CO<sub>2</sub> Reduction ..... 13
  - 5. Industrial Waste Reduction ..... 14
  - 6. Naphtha Reduction ..... 15
  - 7. Water Usage Reduction ..... 16
  - 8. Environmental Audit and Inspection .....18
  - 9. CSR Activities.....19
  - 10. Other Activities..... 21
- VII. Awards and Certificates... ..... 22

# I. Company Profile

Status	: Foreign Capital Investment
Capital Share	: 72.5 % Sumitomo Rubber Industries Ltd 10.0 % Sumitomo Electric Industries Ltd 10.0 % IMG Sejahtera Langgeng 5.0 % Indomobil Sukses Internasional Tbk 2.5 % Sumitomo Corporation
Area Business	: Manufacturing & Sales for Tire & Golf Ball
Market	: Tire for Export 55 % and Domestic 45 % (OE = 15 %, Replacement = 30 %) Golf Ball for Export 100 %
Number of Employees	: 3,310 ( Dec 2023 )
Office	: Wisma Indomobil , 12 <sup>th</sup> Floor Jln.MT Haryono Kav.8 East Jakarta – Indonesia 021 – 851 2561
Factory	: Kota Bukit Indah Blok H Sektor I A Indotaisei Industrial Estate Cikampek, Kab.Karawang, West Java - Indonesia 0264 – 351 346, 351 347

## II. Company Policy

LET'S ACHIEVE NO.1  
BY BEING SENSITIVE TO CHANGE AND FACING CHALLENGES

1. LET'S IMPLEMENT SURINDO WAY AND  
ACHIEVE THE BETTER DEVELOPMENT
2. TAKE ON CHALLENGES IN THE FORM OF CHANGES  
TO MAKE SURINDO A STRONGER COMPANY
3. LET'S CREATE THE HEALTHY WORK AREA WITH SAFETY AND  
COMFORT

JANUARY 2024



TAKAHIKO SHIOMI

### III. Environmental Policy

PT Sumi Rubber Indonesia as tire and golf ball factory was determined to create, preserving and protect the environment that clean and healthful with the way control as well as prevention efforts of environmental impact steady.

To embody the determination of the above, PT Sumi Rubber Indonesia set environmental policy as follows :

- 1.To obey all regulation, government regulation and fulfillment environment rules standard as which have listed in the PROPER (Performance of company's ratings in managing the environmental).
- 2.To determine goals and objectives of the field environmental examines periodically.
- 3.To increase awareness about the activity of understanding and environmental friendly in accordance with the guideline ISO 14001 to all employees, contractors, suppliers and visitor.
- 4.To reduce or change the resources and energy to minimize the impact of the environment as the adaptability on climate change as well as the protection of biodiversity and ecosystem.
- 5.To improve continuous the Environment Management System to be better performance.
- 6.Carry out activities by contributing to the surrounding community.
- 7.As part of SRI-G, we will also implement SRI-G policy.

The Policy is made to be carried out by all employees, contractors and suppliers of PT Sumi Rubber Indonesia.

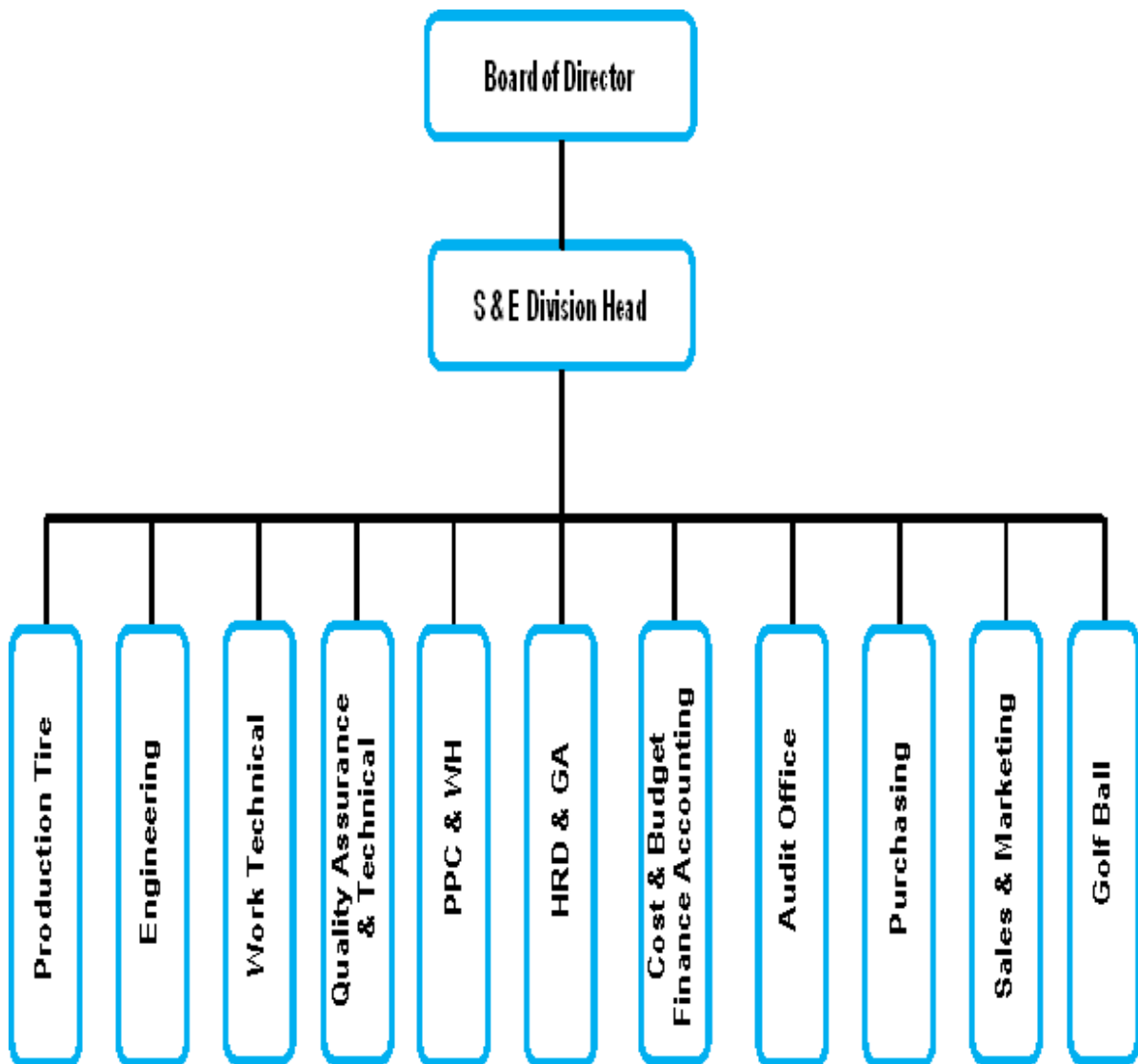
January 2024

TAKAHIKO SHIOMI

President Director

## IV. Structure of Organization

Environment Committee has responsibility to report environmental activities to the President Director as a Committee Chairman. Coordinator and sub coordinator implement the programs and get suggestion from advisor. Environment Committee have representative in each department, which have responsibility to control the implementation of environmental progress in this area. This organization structure shows that the management has high commitment of environmental programs.



# V. Certificate of ISO 14001 : 2015

As a manifestation of our commitment in keeping the environment aspect in good condition. We have implemented the Environmental Management System (EMS) consistently and we have obtained the certificate of ISO 14001 since 2003, and since 2016 already obtained ISO 14001 version 2015.

	Current issue date: Expiry date: Certificate identity number:	5 December 2022 4 December 2025 10492192	Original approval(s) ISO 14001 - 5 December 2007	LRQA
<h2>Certificate of Approval</h2>				LRQA
This is to certify that the Management System of:				LRQA
<h3>Sumitomo Rubber Group</h3>				LRQA
PT. Sumi Rubber Indonesia Bukit Indah City, Blok H Sektor 1A, Indotaisei Industrial estate, Cikampek, Kab. Karawang, 41373, Jawa Barat Indonesia				LRQA
has been approved by LRQA to the following standards:				LRQA
<b>ISO 14001:2015</b> <b>JIS Q 14001:2015</b>				LRQA
Approval number(s): ISO 14001 – 0077120-019				LRQA
This certificate forms part of the approval identified by approval number: 0077120				LRQA
The scope of this approval is applicable to: Manufacture of pneumatic tires (passenger car, ultra light truck, light truck, truck, bus, temporary, and motor cycle) and golf balls.				LRQA
				LRQA
Yasushi Horikawa				LRQA
Japan Operations Manager				LRQA
Issued by: LRQA Limited				LRQA
 				LRQA
<small>LRQA Group Limited, its affiliates and subsidiaries and their respective officers, employees or agents are, individually and collectively, referred to in this clause as 'LRQA'. LRQA assumes no responsibility and shall not be liable to any person for any loss, damage or expense caused by reliance on the information or advice in this document or howsoever provided, unless that person has signed a contract with the relevant LRQA entity for the provision of this information or advice and in that case any responsibility or liability is exclusively on the terms and conditions set out in that contract. Issued by: LRQA Limited, 1 Trinity Park, Bickenhill Lane, Birmingham B37 7EB, United Kingdom</small>				LRQA
Page 1 of 1				LRQA



## VI. Environmental Programs and Activities

PT Sumi Rubber Indonesia always do some programs & activities related To clean and healthy in working area & community area.

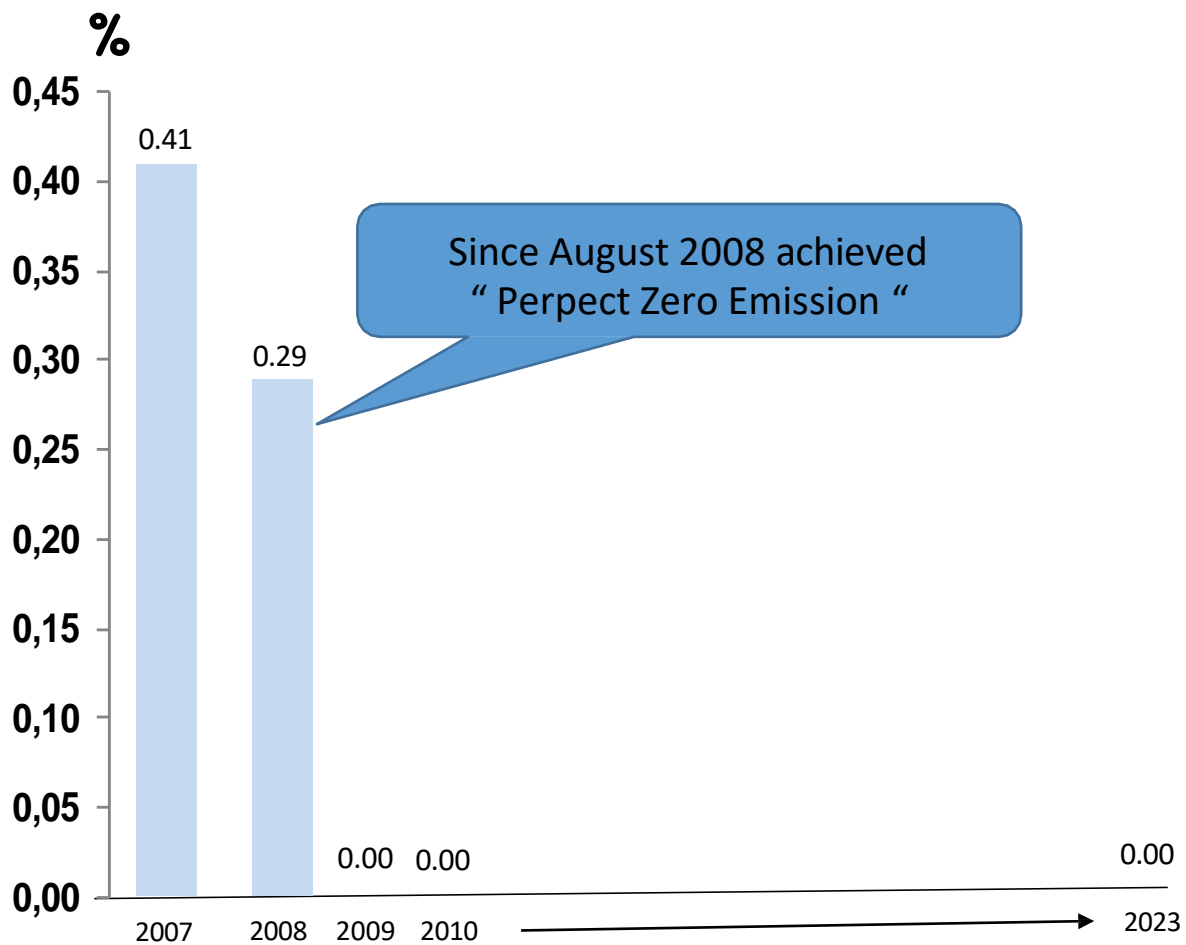
Environmental programs are implemented through following activities :

1. Perfect Zero Emission Programs
2. Monitoring and Measuring
3. Energy Saving
4. CO<sub>2</sub> Reduction
5. Industrial Waste Reduction
6. Naphtha Reduction
7. Water Usage Reduction
8. Enviromental Audit and Inspection
9. CSR Activies
10. Other Activities



## VI.1. Perfect Zero Emission Programs

Perfect Zero Emission is the activity by involve all employees to prevent waste of company to pollute the environmental surrounding. Perfect Zero Emission means that all effect to control and monitor waste which didn't have effect land field and has achieved excellent until index zero and already achieved Perfect Zero Emission since August 2008.



**Note :** Percentage indicates the ratio of landfill waste to total factory waste

## VI.2. Monitoring and Measuring

Objectives of monitoring and measuring activities are as follow :

1. Provide friendly environmental condition for employees based on the existing regulation from government.
2. Anticipate and prevent any kind of condition which have potential to may give bad impact to the employees.
3. Fulfill the requirement of environmental regulation or condition that applied from the government and continue up to date with the newest regulation.

Monitoring and measuring aspect are as follow :

- a. Measuring emission of plant chimney
- b. Measuring of noise level
- c. Measuring of water pollution
- d. Measuring of air ambient (chemical in air)
- e. Measuring emission of factory vehicle (forklift and company car)

### ENVIRONMENT SITE DATA YEAR 2023

ITEM			STD	Min	Max	Avg	REMARK
Discharge to Air	SOx at Boiler	mg/m3	150	2.6	74,4	39.8	OK
	NOx at Boiler	mg/m3	650	1.8	16	8.9	OK
to Water	BOD	mg/L	150	8.8	35	26.3	OK
	SS	mg/L	400	42	87	82,5	OK
	PH	-	6 ~ 9	7.98	8.09	8.03	OK

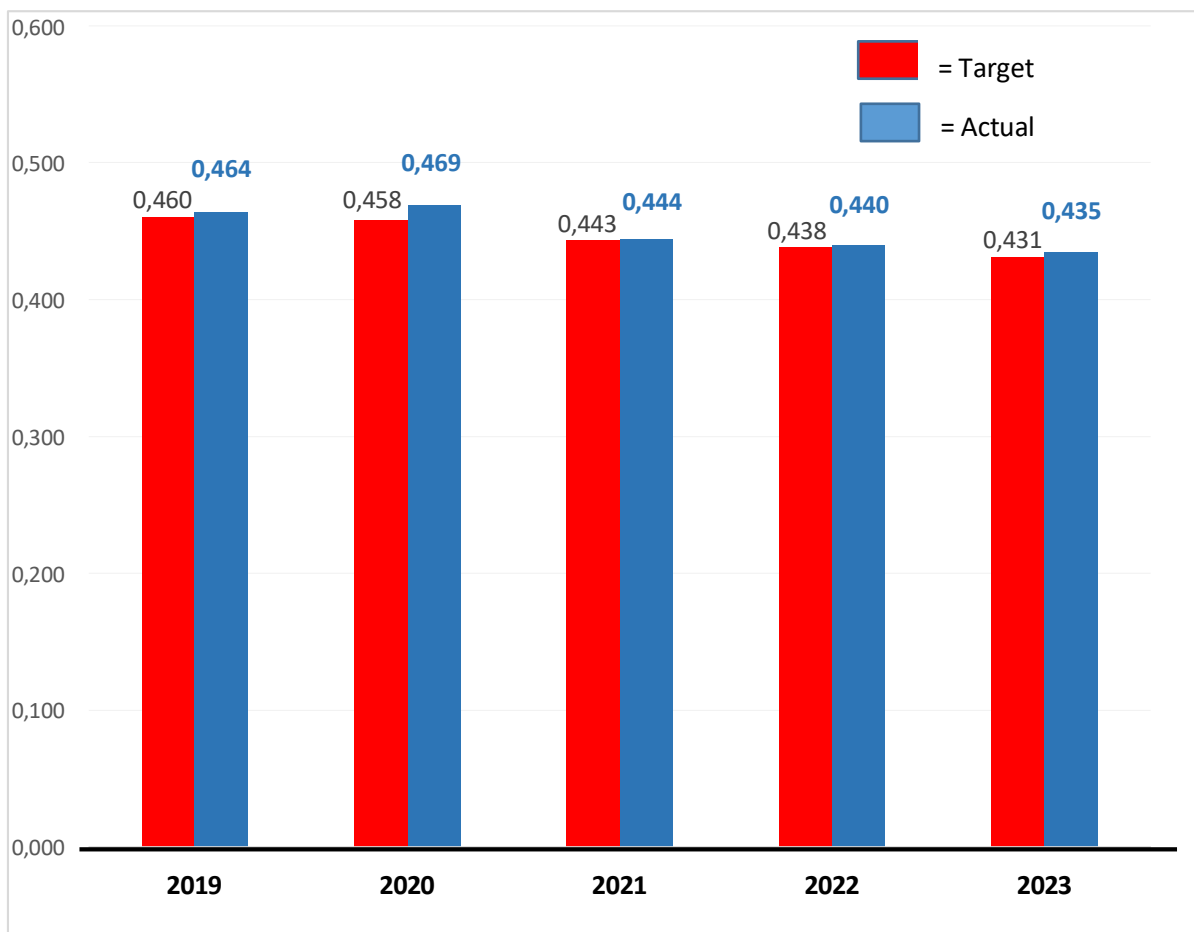
## VI.3. Energy Saving

The 2023 energy index is worse than the previous year due to several factors such as Production 93.7 % compare to the previous year, energy loss from equipment whose Efficiency has decreased, and others.

In 2024, energy saving plan of electric as follows :

- # Improve Air leakages/Improve Air compressor
- # Change centrifugal fan to smaller in T/L,SW
- # Renewal motor to IE-3 / energy saving type, etc.

KL / Ton

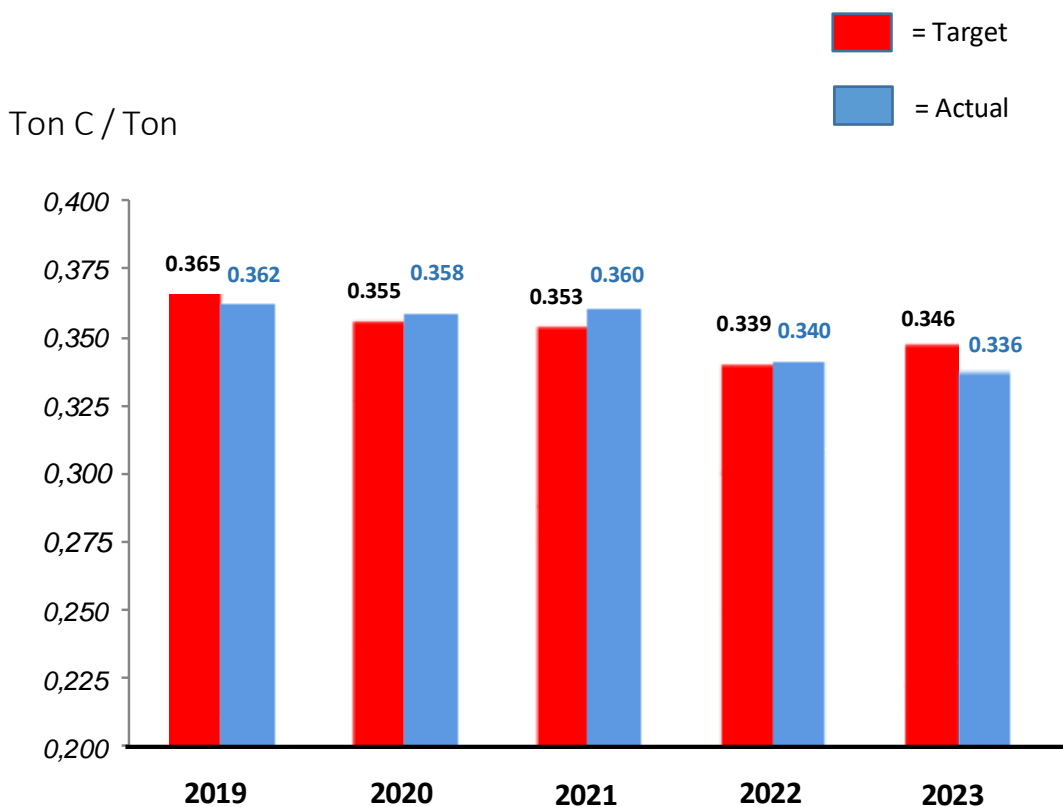


## VI.4. CO<sub>2</sub> Reduction

Since the middle of last year, Surindo has used 30% renewable electric energy from Government companies, and starting January 2024 it will also use 6% of electrical energy from solar panels installed on the factory roof.

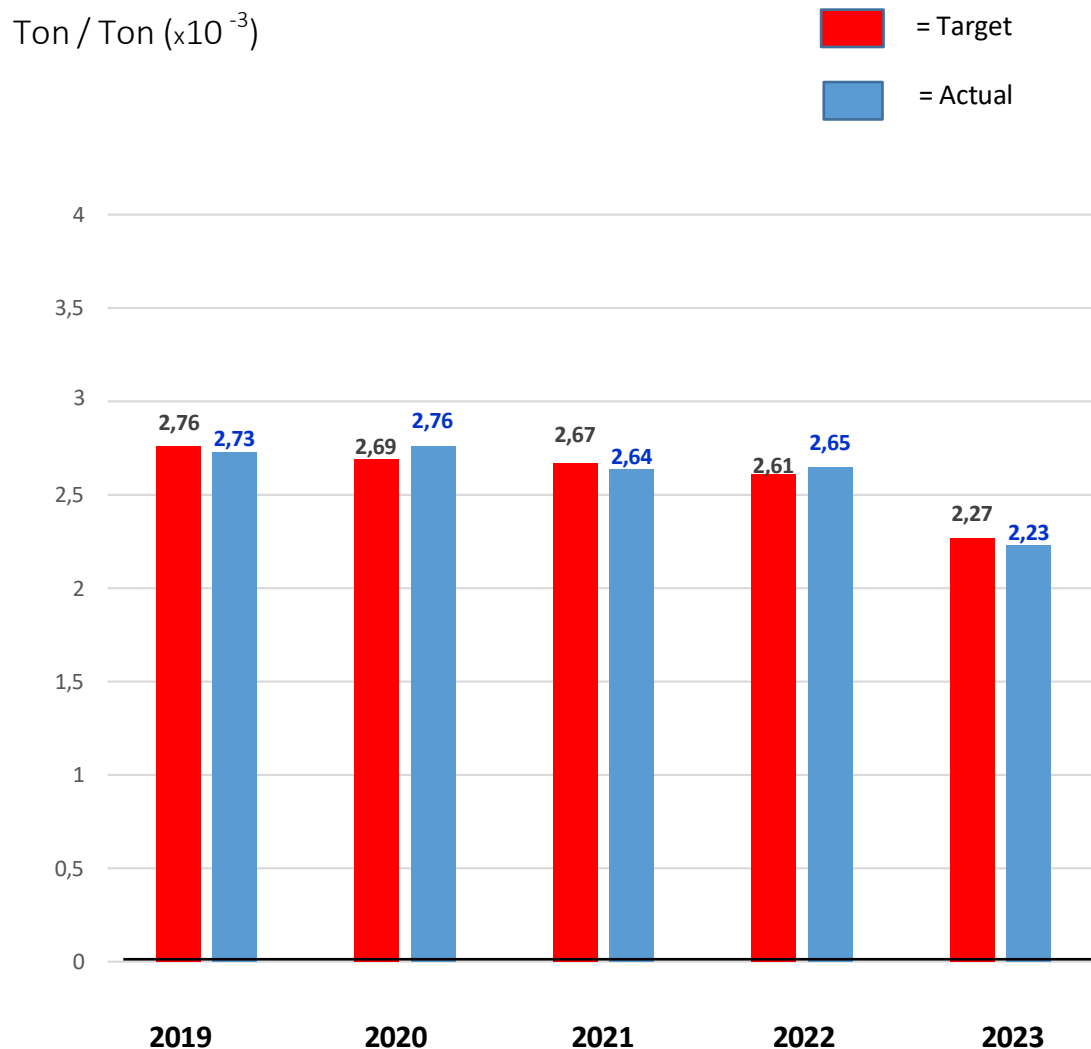


Solar Panels of Energy source



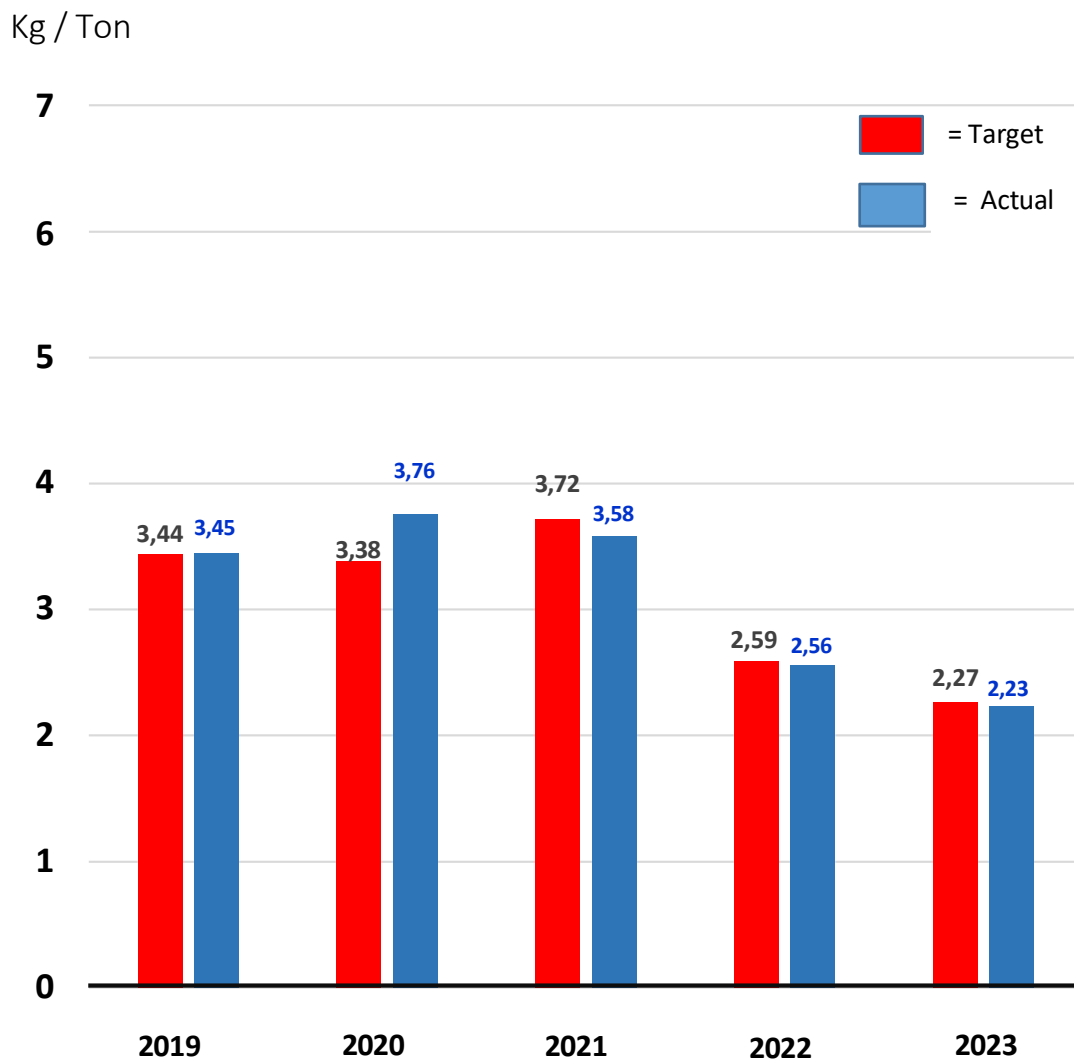
## VI.5. Industrial Waste Reduction

We have activities to reduce industrial waste such as recycle waste in the waste disposal management system. It is very effective for outside company. We separate waste by category and it is very effective.



## VI.6. Naphtha Reduction

In the tire manufacturing process, we use naphtha (organic solvent), for solution process and tire cleaning, but also we continue to reduce naphtha consumption, based on SRI target reduce 1.5% compare to last year. In additional, we also use the material water base to reduce use of naphtha or dangerous material and easy burning. The other activity is eliminated naphtha use for tread licking solution for t-tire in extruding process.

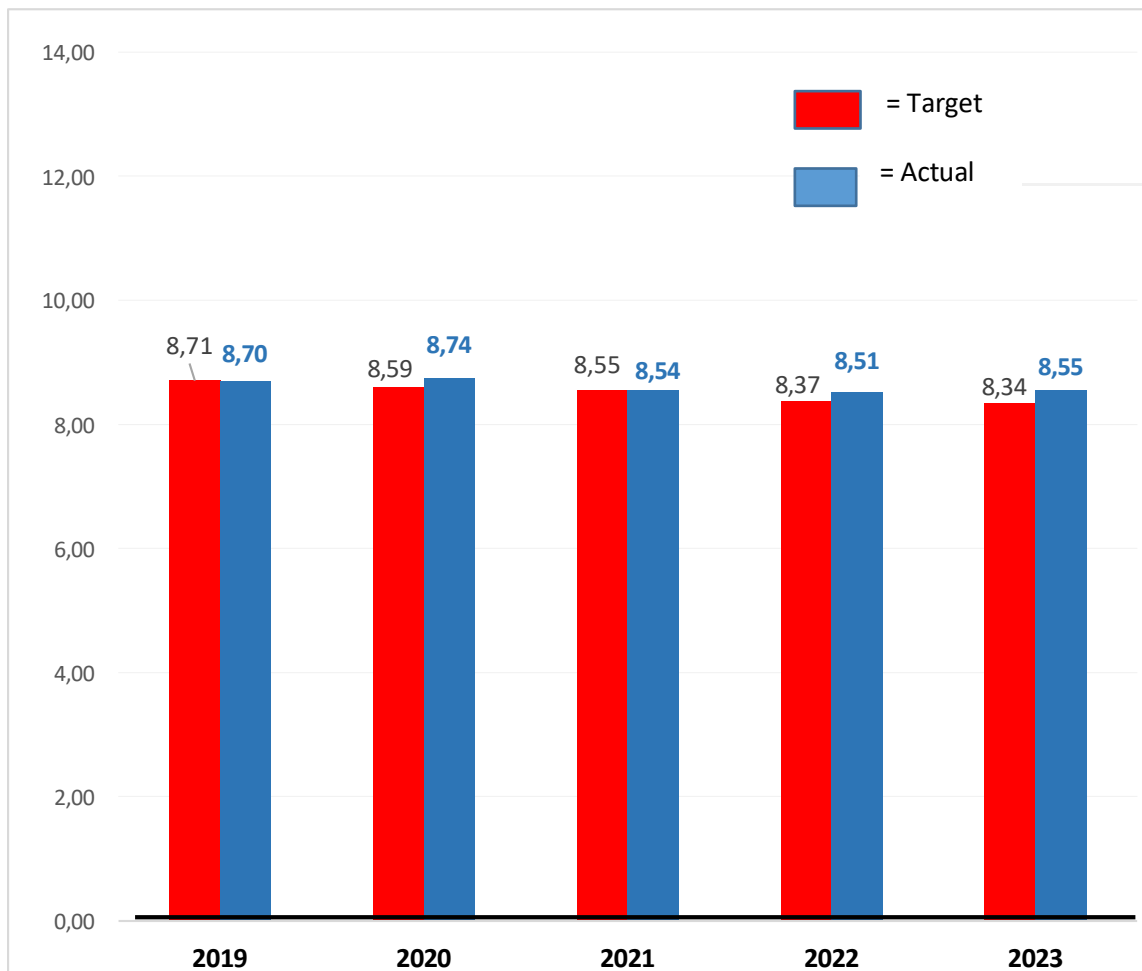


## VI.7. Water Usage Reduction

In 2024, There are several improvements that will be made as follows

- Reduce water leakage in CWS line
- Reduce water leakage of hydraulic water curing
- Reuse condensate water
- Install cooling tower system of SW# 1

m<sup>3</sup> / Ton



In 2023 it was not achieved target due to decreasing rubber ( production volume ) 6.3% compare to previous year, water leakage in CWS line, and need more fresh water in s/w #1 to improve sidewall quality.



## VI.8. Environmental Audit and Inspection

Annual Audit by Lloyds Register ( ISO 14001:2015 )



To make sure PT Sumi Rubber Indonesia abide the rule of the environmental regulation, then every year carried out of the audit from Lloyds International Register, and the result until now, PT Sumi Rubber Indonesia always abide the regulation.

## VI.10. CSR Activities

### A. Fogging



We have continue fogging since 2012, this activity routine almost every week because of employee request for people to do fogging in their residence.

Even though the condition is included in the covid-19 pandemic. We still carry out fogging activities considering the needs of the people who need it because at the same time dengue fever outbreaks also occur in the surrounding community.

During 2023, Fogging have been carried out 42 times in several employee residential areas.

## **B. Blood Donation**



Purpose :

Continue to prepare blood stock for the Red Cross Organization when there are people who need a blood transfusion. In 2022 we can't do maximally blood donation due to It's still during the covid-19 pandemic.

In 2023, blood donations were carried out every month with a total of 368 employee donors.

## VI.11. Others Activities

### DONATION DONATION

- Donation Rice steamer to Dawuan Barat village.



- Donation Qurban 5 goat to Desa Dawuan barat, kalihurip, sasakseng, mosque wisma indomobil dan Pemda karawang



- Donation in ledul fitri (moslem day) for sociaty



- Donation of CSR for renovation of mosque at Kalihurip village around factory



## VII. Awards and Certificates

PT Sumi Rubber Indonesia received PROPER award 2023 ( Rating of Company's performance in environmental management ) from the Indonesia Ministry of Environment with BLUE level, which mean a company has fulfilled of requirement environmental management which accordance with the government regulation.





Yan Uripandra  
yan@dunlop.co.id

Zuhendri Mukhtar  
envdept@dunlop.co.id