



SRSA

Environmental Annual Report

2024

- Factory Introduction [*Town Area*]
- Environmental Certification
- Emissions Monitoring
- Energy Management
- Waste Management
- Water Management
- Scrap Tyre Reconciliation
- Sustainability Projects / Initiatives
- CSI (Corporate Social Investment) Projects / Initiatives

Factory Area Introduction



Established in 1850; Named after Juana María de los Dolores de León Smith; Wife of then British Governor Sir Harry Smith

レディースミスは1850年、当時の英国中将ハーリースミスの妻フアナ・マリア・デ・ロス・ドロレス・デ・レオン・スミスにちなんで名付けられた。

Small town at 84.13 km² (32.48 sq mi) with a population of 66 000 people; Mixed race and multi lingual.

人口66,000人、 84.13 km² (32.48 sq mi)の小さな町。
多民族、多言語。

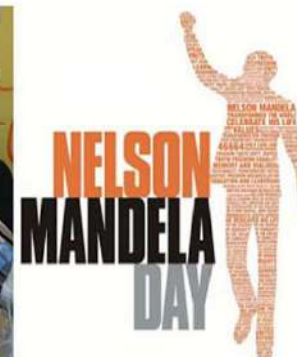
South Africa Plant (Sumitomo Rubber South Africa (Pty) Limited)

Sumitomo Rubber Industries, Ltd. TOP > Sustainability > Sustainability Initiatives at Manufacturing Bases > South Africa Plant

Overseas South Africa Plant (Sumitomo Rubber South Africa (Pty) Limited)

Sustainability Initiatives

As a good corporate citizen and the most responsible tire plant in Africa, the plant has set strategic priorities for “occupational health and safety and utilization of diverse human resources,” “environmentally friendly production technologies and processes,” “support for the disadvantaged,” “correction of external activities that have a negative impact on communities and the environment,” and “community contribution activities in which employees participate in cooperation with local partners.” We are working on.



Recognizing that children's education is of the utmost importance to the development of South Africa, we donated stationery, learning puzzles, coloring books and books. We also donated sanitary products to support female students in commuting to school and studying.

Basic Information

location	KwaZulu-Natal , South Africa TEL.+27-31-242-1111
Number of employees	1,415 (as of the end of December 2021)
Year of operation	1973
ISO14001 Certification	We have acquired ISO14001 global integrated certification for our environmental management system (certification number "0077120") and have unified our environmental management system.
Main manufacturing items	Automotive Tires



Environmental Policy

[Environmental Policy of South Africa Plant\(PDF 128KB\)](#)



Environmental Policy Statement

Located in Helpmekeer Road Ladysmith (Erf 2434) Kwazulu-Natal, Sumitomo Rubber South Africa manufactures and warehouses tyres on behalf of their parent company, Sumitomo Rubber Industries, Ltd (SRI), for use in domestic and commercial vehicles. Sumitomo Rubber Industries, Ltd (SRI), is headquartered in Kobe, Japan and is the fifth largest tyre manufacturing company in the world, responsible for producing and distributing the iconic Dunlop brand, amongst other high-quality products.

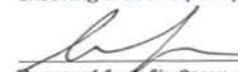
Sumitomo Tyres recognises that promoting sustainability and protection of the environment is vital for future generations. It is our objective to maintain continuous improvement of environmental performance within the scope of our manufacturing process and capabilities. We are determined to ensure that wherever practically possible, our activities will minimise the effect on the environment and are committed to maintaining our ISO 14001:2015 certification.

Reviewed at regular intervals, all employees of Sumitomo Rubber South Africa strive to:

- Protect the environment and prevent pollution.
- Prevent, monitor and report GHG emissions, energy efficiency and renewable energy. Adherence to GHG emissions per applicable legislation.
- Comply with relevant environmental legislation and industry codes of practice.
- Provide suitable and sufficient training and information to employees and contractors to help fulfil these responsibilities.
- To improve the environmental awareness of our employees.
- Continually improve our environmental management system to enhance environmental performance.
- Maintaining good water quality for safe use and consumption.
- Adhere to all emissions standards as outlined in applicable legislation.
- Follow good sustainability practices including reduction, reuse, recycling and recovery of waste wherever financially and logistically feasible.
- Identify any risk of pollution arising from our activities and eliminate or reduce in line with requirements.
- Establish realistic objectives and targets for the reduction of energy and fuel use, waste reduction initiatives throughout the group's activities, transport and premises.
- Consider wherever possible, sourcing of raw materials with a reduced environmental impact.
- Communicate our environmental policy and scope with interested parties if asked to do so and respond to comments and questions from interested parties timeously and honestly.

Directors are responsible for:

Ensuring that this policy is published, understood and implemented in their departments.



Approved by *Asidin Ozoux, CEO* - 15 September 2021



VACCINES SAVE LIVES BY PREVENTING DEADLY DISEASES AND DEATH.

- Getting the **Covid-19 vaccine** can help your body to **fight the virus**. It is **safe and effective**, and does not contain the active virus.
- **Nobody in South Africa** has died directly due to a **COVID-19 vaccine**, according to the South African Health Products Regulatory Authority (Sahpra).
- **Protect yourself, your family and your community. Get vaccinated.**

#VaccinesWork #GetVaccinated

Remember: We still need to obey all the existing Covid-19 safety measures:



KEEP A DISTANCE
of 1.5m from
other people.



WASH OR SANITISE
your hands regularly.



CLEAN SURFACES
regularly.



WEAR A MASK
in public.



Crowds and large
gatherings are
PROHIBITED!

#SaferThanSafe

BROUGHT TO YOU BY

SUMITOMO RUBBER
SOUTH AFRICA (PTY) LTD.

DUNLOP
TAKE THE ROAD



Current issue date:	5 December 2022	Original approval(s):
Expiry date:	4 December 2025	ISO 14001 - 5 December 2007
Certificate identity number:	10482204	

Certificate of Approval

This is to certify that the Management System of:

Sumitomo Rubber Group

Sumitomo Rubber South Africa (Pty) Ltd.
151 Helpmekeer Road, Danskraal Ladysmith, 3370, Kwazulu-Natal, South Africa

has been approved by LRQA to the following standards:

ISO 14001:2015
JIS Q 14001:2015

Approval number(s): ISO 14001 – 0077120-031

LRQA

LRQA

LRQA

LRQA

LRQA

LRQA

LRQA

LRQA

LRQA

LRQA

This certificate forms part of the approval identified by approval number: 0077120

The scope of this approval is applicable to:

Development, industrialization and manufacture of pneumatic radial tyres.

LRQA

LRQA

LRQA

LRQA

LRQA

LRQA

LRQA

LRQA

LRQA

Yasushi Horikawa

Japan Operations Manager

Issued by: LRQA Limited



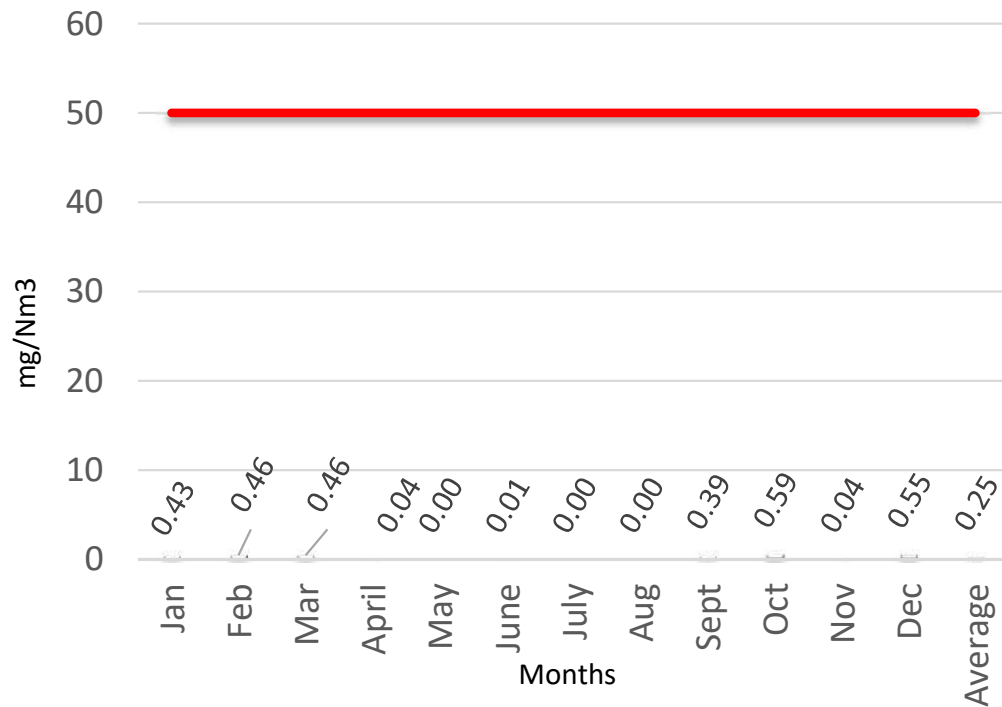
Environmental Data 2023

	Facility	Item	Unit	Regulatory Value	FY 2023 Results			Legal name, etc. Legislation to verify the regulation value
					Smallest Min	Maximum Max	Average Ave.	
Emissions to the atmosphere	Boiler	Sox	mg/Nsm ³	2800	384.90	1,989.00	839.51	NEMAQA Section 23
		Nox	mg/Nsm ³	-	355.00	796.26	458.71	
		Dust, Particulate matter	mg/Nsm ³	120	196.55	845.00	502.44	NEMAQA Section 23 - Small Boiler as a Controlled Emitter, Category 1: Solid Fuel Fired Small Boiler is over the legislative limit for new plant limits.
Discharge into water bodies. Drainage	Drainage Waste water	BOD	mg/L	-	-	-	-	-
		SS concentration Suspended solids	mg/L	-	-	-	-	

PM exceedance comments:

1. The Boiler #4 grit collector cannot keep this parameter in spec, that is why a decision was made to purchase the bag filter.
2. Procurement is engaged with bag filter supplier to fix the bag filter issues.
3. Concurrently they are in consultation with John Thompson for a possible solution should the awarded vendor fail.

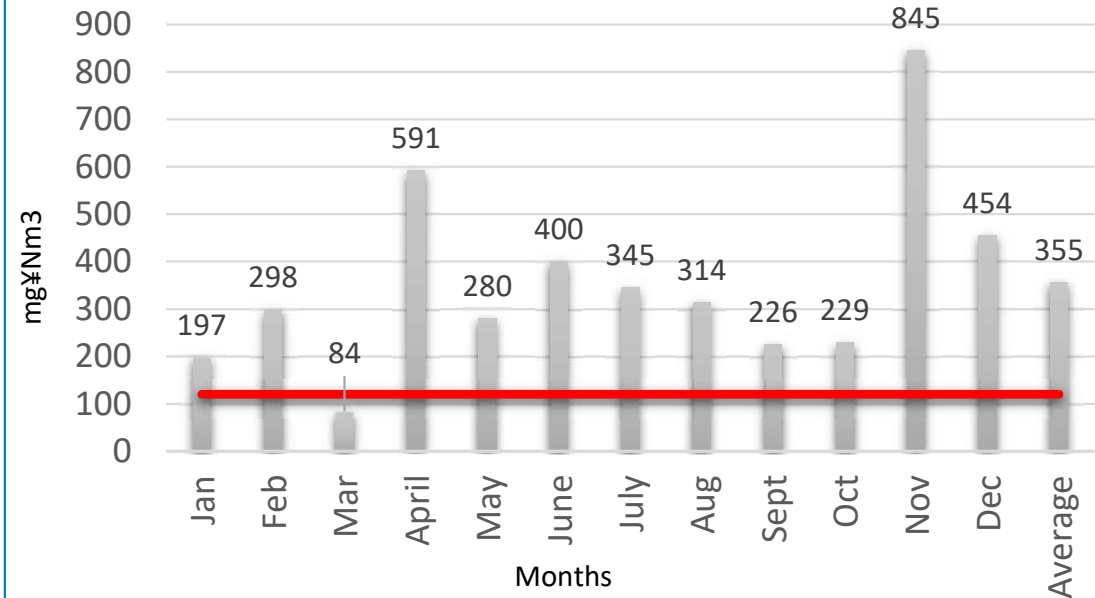
VOLATILE ORGANIC COMPOUND - VOC



█ Volatile Organic Compound-VOC

— VOC SRSA Target **50**

PARTICULATE MATTER - PM

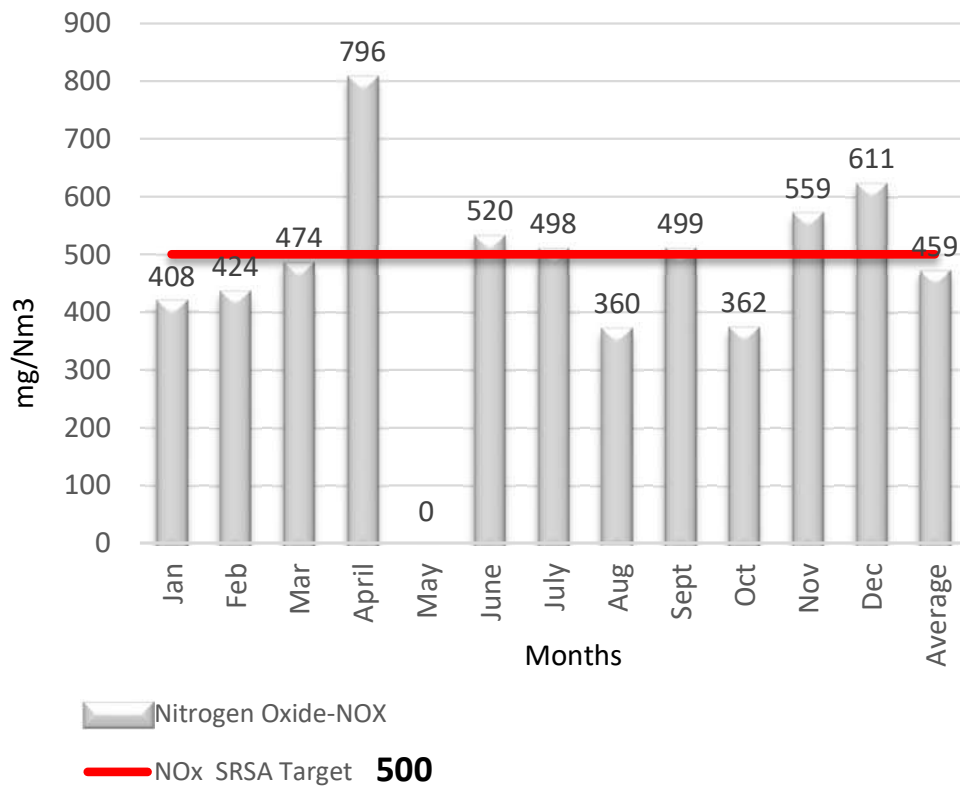


█ Particulate Matter- PM **120**
 — PM Emission Standard

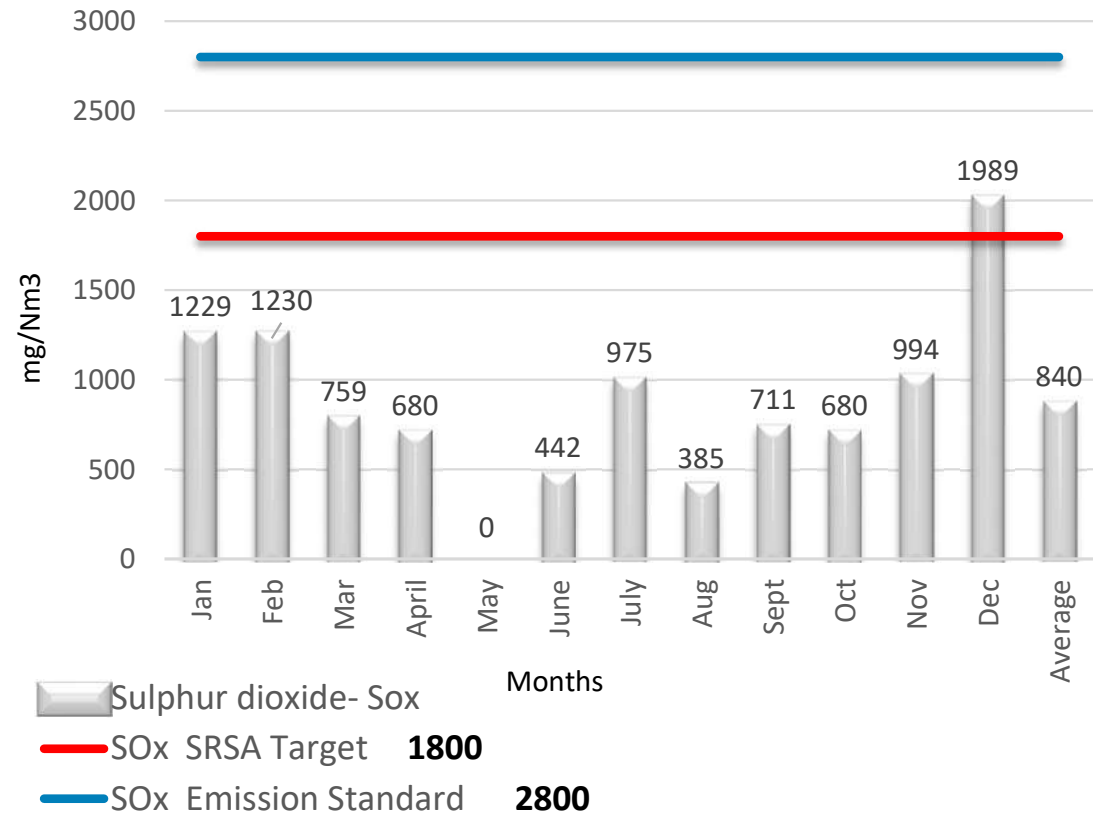
PM exceedance comments:

1. The Boiler #4 grit collector cannot keep this parameter in spec, that is why a decision was made to purchase the bag filter.
2. Procurement is engaged with bag filter supplier to fix the bag filter issues.
3. Concurrently they are in consultation with John Thompson for a possible solution should the awarded vendor fail.

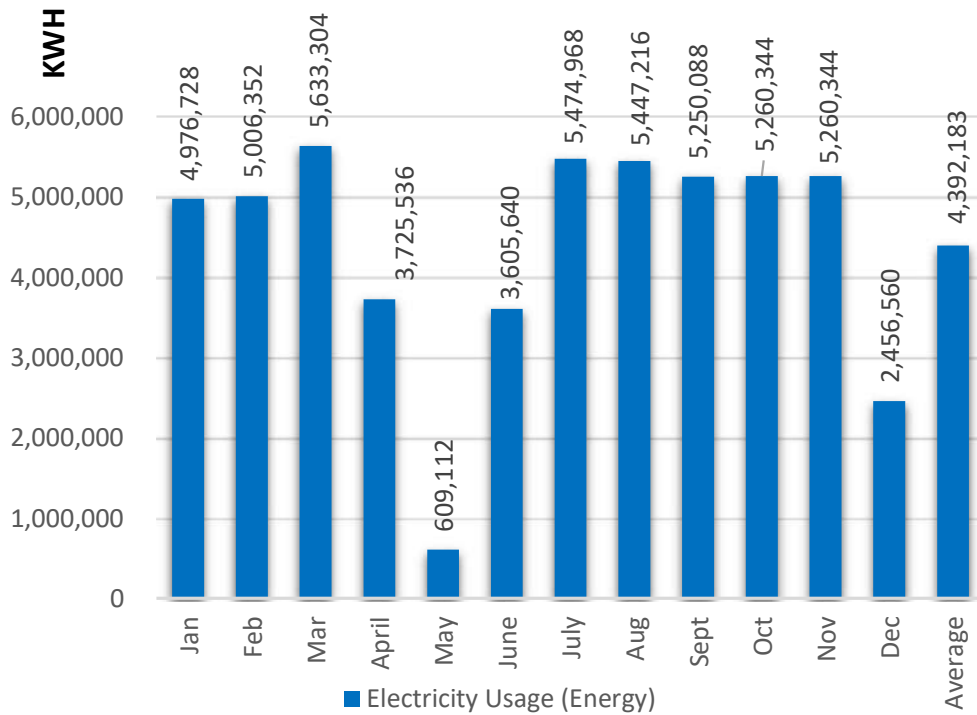
NITROGEN OXIDE - NO_x



SULPHUR DIOXIDE SO_x

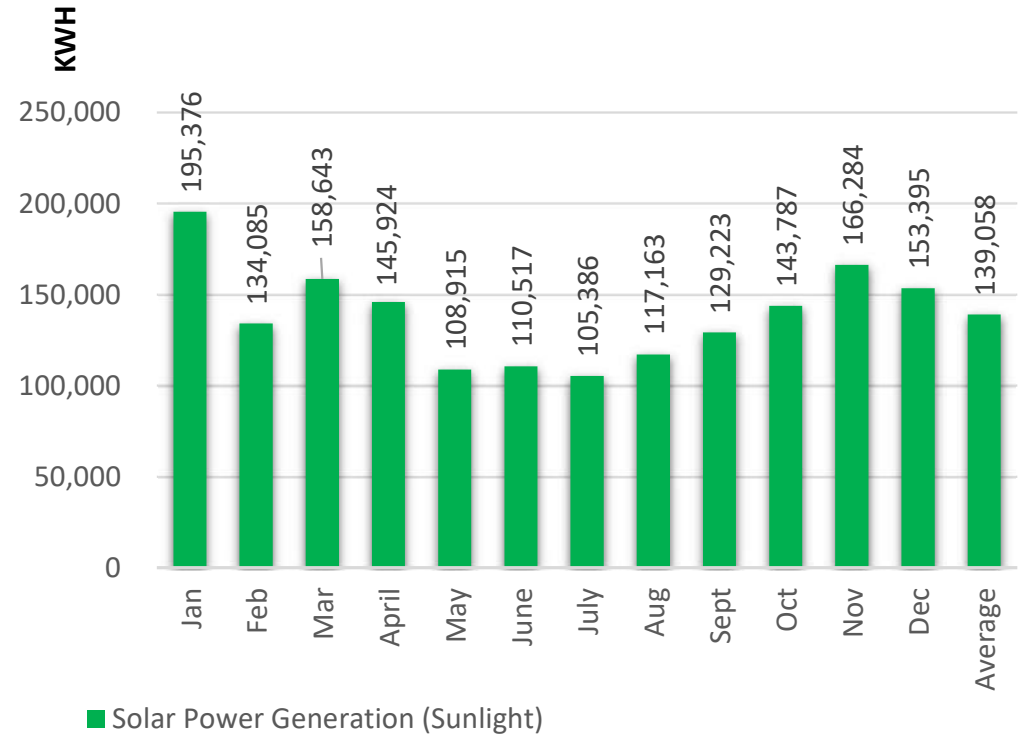


Electricity Usage



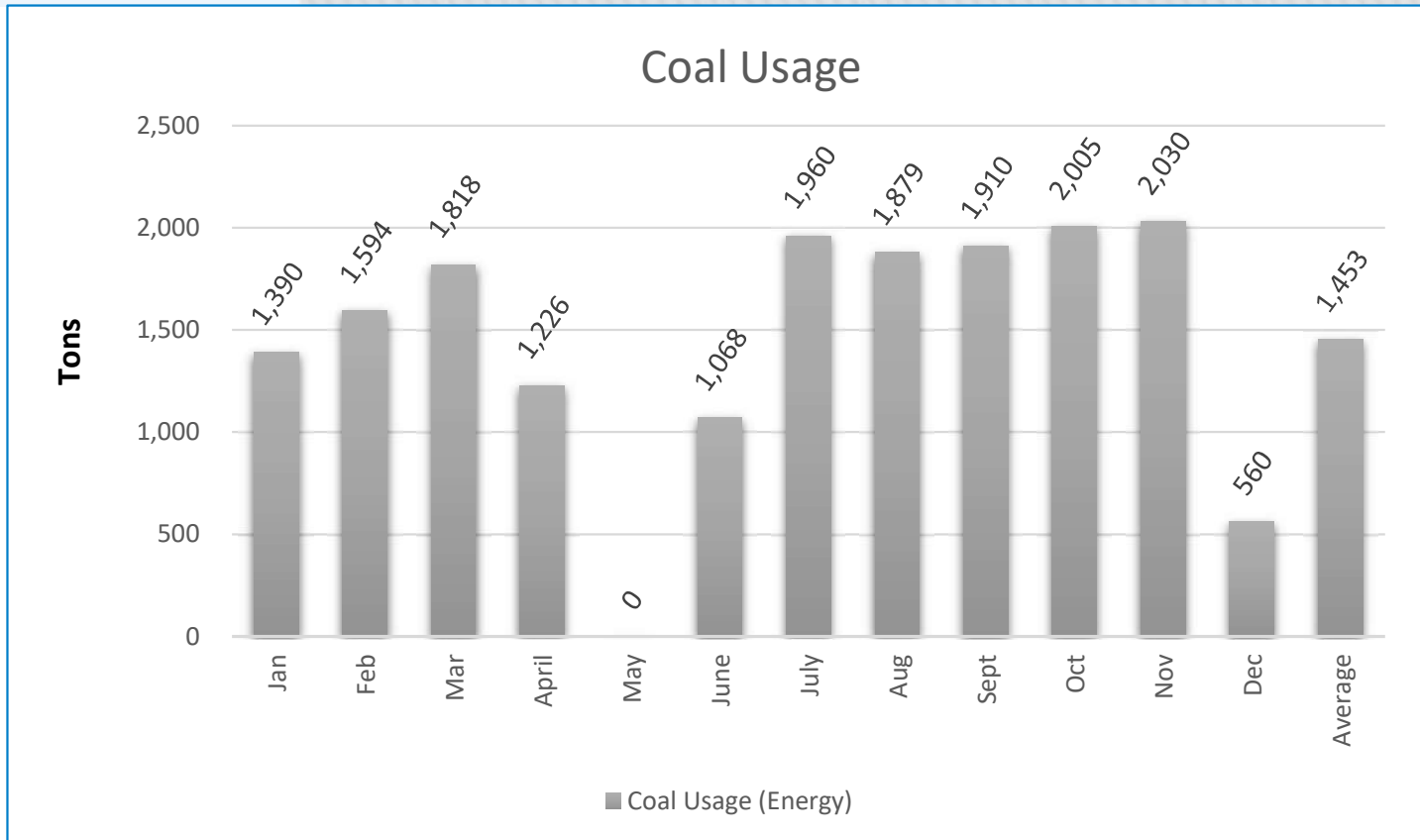
Electricity usage from Municipality average is below 5000 MWH since we started using Solar power

Solar Power Generation (Sunlight)

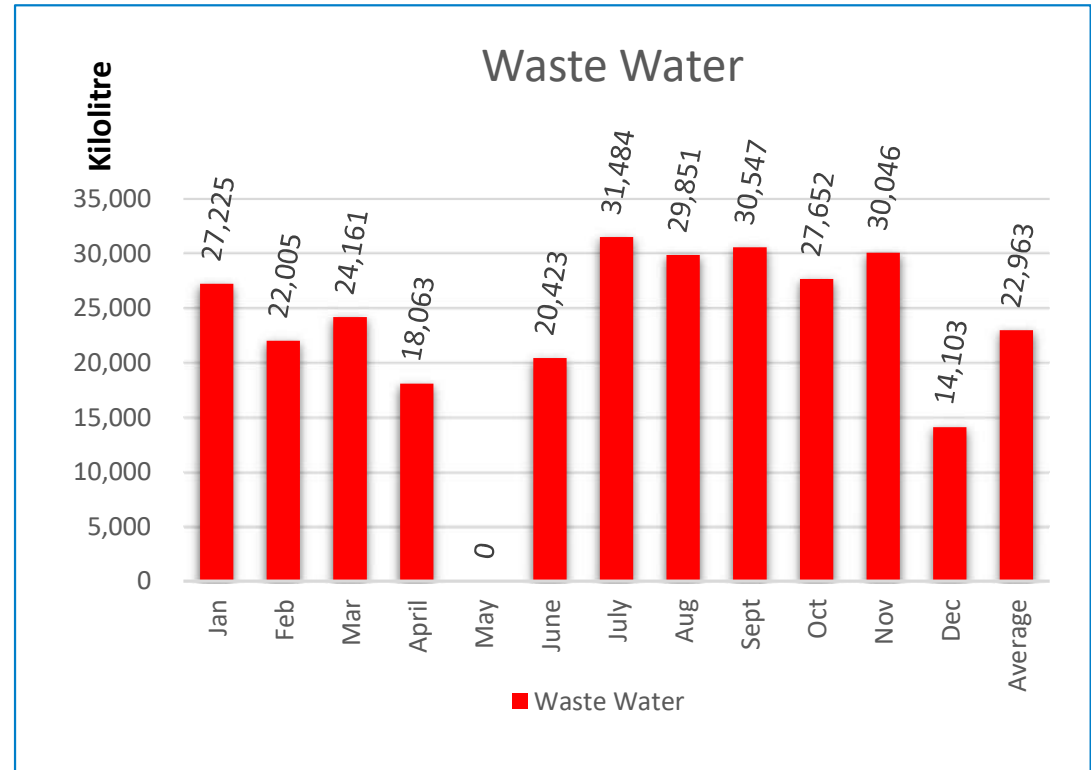
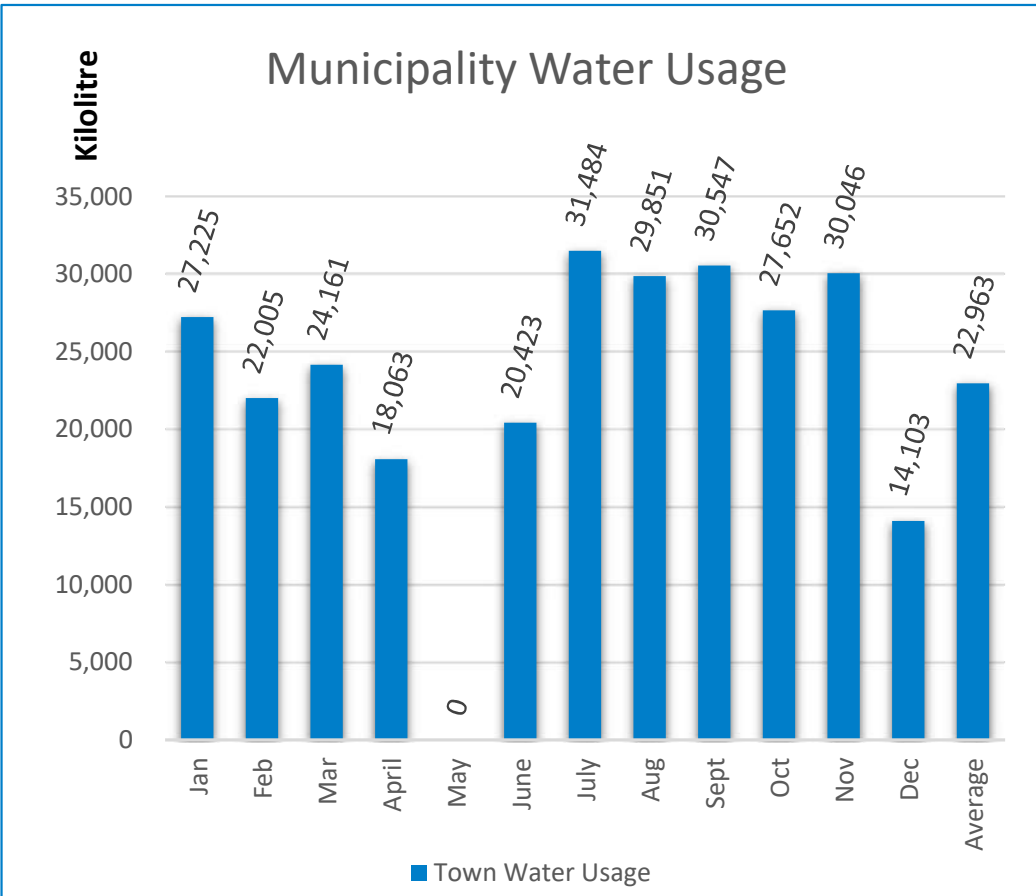


Solar power generation is part of sustainability projects

Energy Management 2023 (2 of 2)



Average coal usage is 1453 tons per month

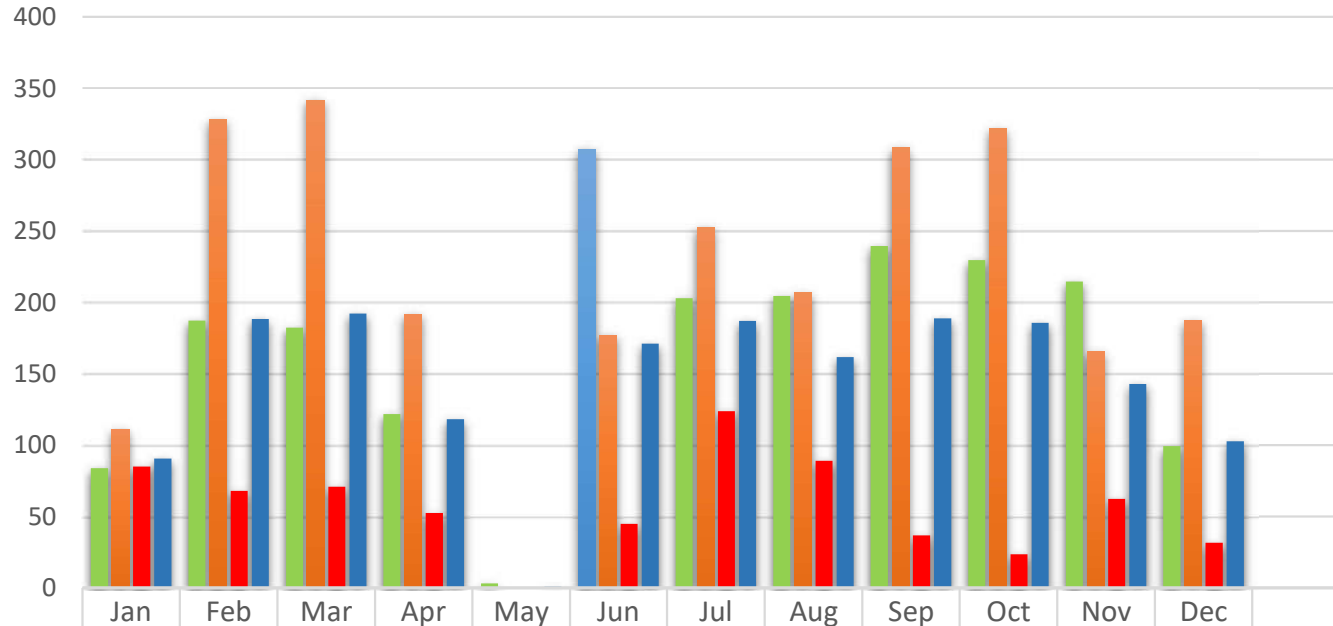


Average water usage is 22963.33 kilolitres per month

Comments:

- SRSA does not test or measure waste-water. No requirement to measure.
- Waste-water is recycled by cooling hot coal ash from our coal Boiler
- Extra waste-water is directed to sewer line that runs back to Government Municipality for treatment. Sewer is inclusive of human waste.

Waste Recycled vs Waste Landfill vs Target Landfill: Jan – Dec 2023



	Jan	Feb	Mar	Apr	May	Jun	Jul	Aug	Sep	Oct	Nov	Dec
■ Recycled (Waste Yrd)	84.02	187.31	182.43	121.73	3.10	307.51	202.91	204.42	239.51	229.71	214.67	99.30
■ Recycled (Coal Ash)	111.22	328.10	341.80	191.84	0.00	177.22	252.56	206.80	308.26	321.62	165.66	187.32
■ Waste to Landfill	85.05	68.08	70.92	52.58	0.00	44.98	123.77	89.13	36.92	23.58	62.32	31.68
■ Landfil Target (3rd of total monthly waste less 1%)	90.53	188.43	192.30	118.27	1.00	171.10	187.09	161.61	188.85	185.70	142.98	102.81

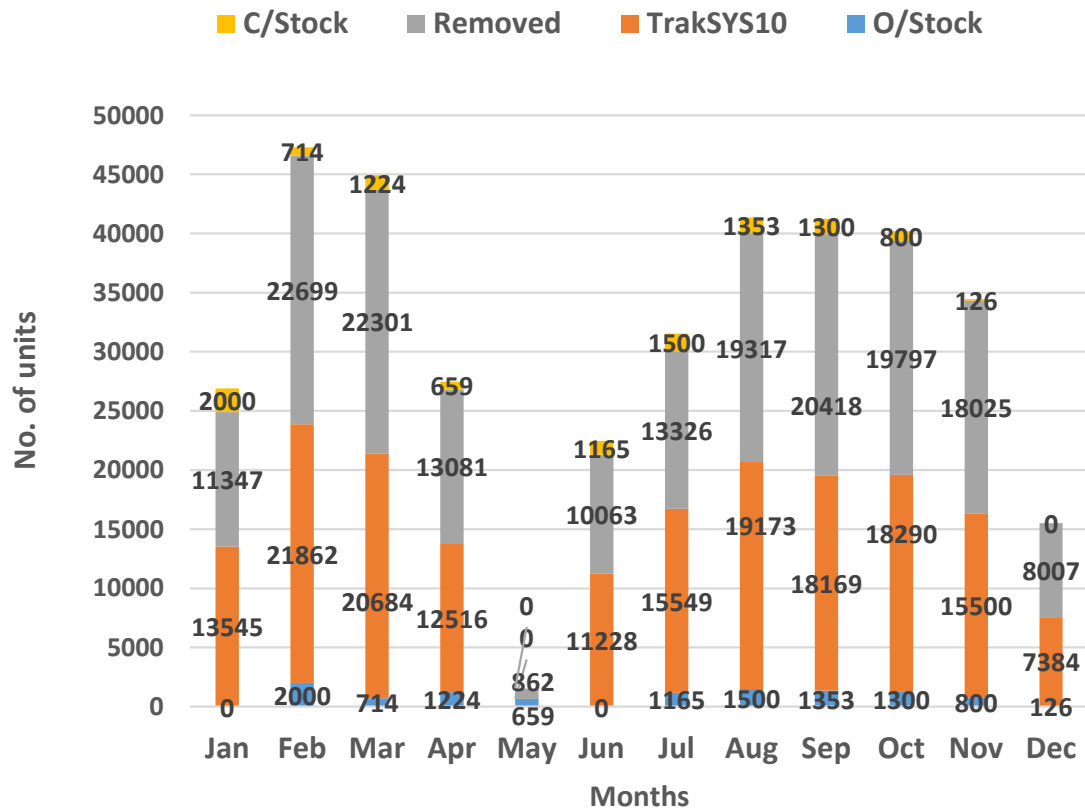
Landfill Waste Stream

- General Waste
- Cured Compound
- Carbon Black
- Sludge
- Contaminated Packaging
- Calendered Steel
- Fluorescent Tubes
- Bead wire
- Effluent

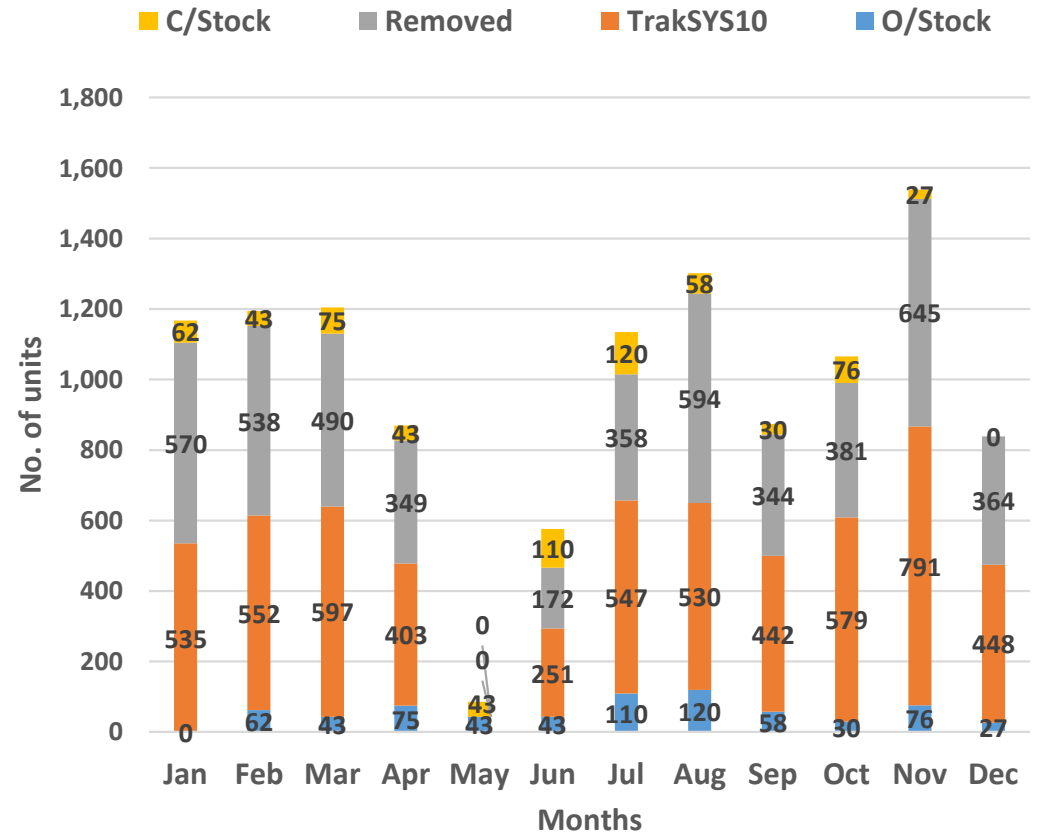
Recyclable Waste Stream

- Coal ash
- Uncured Compound
- Paper & cardboard
- Bladders
- Waste process oil
- Empty drums
- Calendered fabric
- Wood & Plastic pallets
- Scrap metal
- Steel cords
- PET plastic bottles & caps
- Cans
- Electronic waste

PCR - Scrap Tyre Reconciliation



TBR - Scrap Tyre Reconciliation



Social and Economic Development

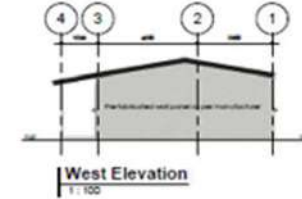
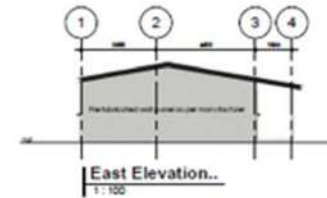
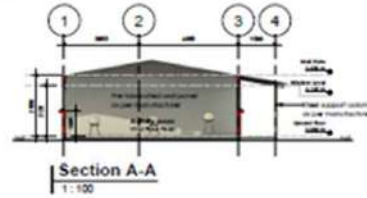
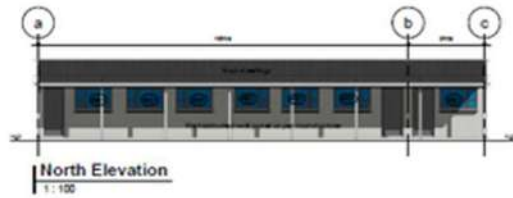
Joanne de Freitas



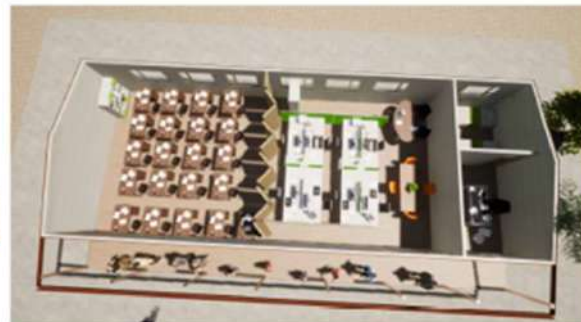
**2024 PRIORITY: IMPROVING THE LIVES OF OUR EMPLOYEES
AND THE COMMUNITY**

2023 UPDATES	ACTION PLANS/AREAS	COMMENTS	Cost Actual or Estimate
Sustainable Water Supply	Donation of JoJo Tanks	<p>As part of the Ladysmith Plant 50 Year Anniversary and Mandela Day, we will be donating the following: 1000L x 2, 2200 L x 4, 2500L x 1, 5000L x1, 10 000L x 4. Tanks will be delivered and installed at TVET Colleges in and around the <u>uThugela</u> District. Mandela Day – delayed due to plant strike.</p> <p>Purpose: support the local community of Ladysmith with fresh water for health benefits as well as supporting the efficiency of their washroom facilities. This is in line with our CSI strategy of supporting in Education in Ladysmith</p> <p>2024 Update: This project has not gone smoothly. The 2 x large 10 000L tanks were unfortunately used by some-one at the factory to store acid, therefore they were unusable. The remainder of the JoJo tanks were damaged by a water tank/cylinder that someone placed near the JoJo tanks and it fell over and damaged the remaining tanks. We have now purchased 2 x 10 000L new JoJo tanks which will be installed on Saturday, 15th June 2024. We will not be purchasing / installing any further JoJo tanks.</p>	R30 375 excl.
Corporate Social Responsibility	Building 2 new Classrooms	<p><u>Ithubelihle</u> Special Opportunity School is a Private school for a special needs child in Ladysmith. Proposal is to build 2 classrooms out of waste product from our own Ladysmith Plant i.e. secondhand tyres, coal ash to make bricks, used bottles supplied by the community for windows. This project covers Sustainability, CSI strategy and Skills Development.</p> <p>Purpose: To support our local schools to develop their schools to be in a position to offer suitable education and schooling facilities to all pupils.</p> <p>2024 Update: This project has also not been successful. After multiple onsite meetings and Education Department meetings, the Education Department, earlier this year, advised that we cannot proceed with our school classroom build. This is because the school in question is a private school on Govt land. Whilst this has been extremely frustrating, we are unable to move forward with the sustainable build. We have sourced an alternative supplier to move ahead with prefab classrooms, as these are not fixed structures. Designs have been created and approval given. Natural Building Collective will settle all invoices for the new classrooms as we will no longer be in a position to utilize their services for this particular school.</p>	R 1 207 618.22

Internal and Community programs



Updated plans
for classroom



2024 THEMES	ACTION PLANS/AREAS	COMMENTS	Cost Actual or Estimate
Corporate Social Responsibility	Blanket Donations	<p>A charity event was held at a Dunlop Motorsport event on 08 June 2024 and donations of blankets were received from all our sponsored racing series.</p> <p>Purpose: This event was held to strengthen the collaboration between ourselves and our series owners as well as pushing our Corporate Social Responsibilities.</p> <p>The blankets will be split between Jhb / Ladysmith / Durban NPO organizations and will be handed out by employees with assistance of Gift of the Givers and Bilal Jeewa.</p>	No cost – goods donated
Corporate Social Responsibility	Monetary donation to SeaTides Combined School	<p>Sumitomo Rubber will donate funds to Gift of the Givers to the value of R100 000 which will go towards the rebuild of SeaTides Combined School that was damaged in the recent tornado that hit Tongaat, KZN.</p> <p>Purpose: Ensuring that all scholars who attend this school and get back to completing their school syllabus as soon as possible. It is a great opportunity to improve the infrastructure and facilities of the school to further enhance school learners. SRSA have some Head office employees who have children that attend this school.</p>	R100 000.00
Corporate Social Responsibility	Toilets for MC Varman and Ithubelihle Special Opportunity Schools	<p>Sumitomo Rubber to collaborate with Gift of the Givers and install flushing toilets at MC Varman and Ithubelihle. Both these schools are in dire need of additional toilet facilities.</p> <p>Purpose: Our aim is to uplift the facilities of the school by ensuring that there are a suitable number of ablutions facilities to accommodate all scholars at each school. All schools should have sufficient toilets and hand washing facilities to meet their learners needs. This will ensure a clean and hygienic environment for the scholars.</p>	TBC

SI No	ACTION	BENEFIT / OUTCOME	RESP	DATE
1	Indigenous trees planning within plant premises to improve water preservation	Create green cover around the factory and rehabilitate the construction site. Project started in June 2022. Planted 200 trees in 2022 Planted 100 trees in 2023 Planting +100 plus trees in 2024	Cyril Nkosi	Completed & Ongoing
2	LED light conversion and lowering of lights to be completed in the PCR factory.	OEM requires higher lux compared to standard. The project will increase the lux to government regulation without increasing electricity usage.	BT Engineers	70% complete 100% complete by end of 2024
3	Solar panel PV power generation thru a PPA model	Reduce conventional energy usage. Awaiting SRI approval.	Krishna Ravindran	To Be Advised.
4	Rehabilitation of Engineering Pen (storage) ground area after clearance of metal waste	Improve housekeeping and compliance with ISO 14001 accreditation	Maintenance, Safety & Stores Supervision	September 2024

- Based on the strict requirements on Sustainability from the OEMs and vast impact on Climate change. SRSA has taken the proactive approach and engaged Sustainability Consultant.
- The consultant is currently doing the gap analysis and identifying the gaps withing our current processes. Thereafter, develop a 5-year plan that will cover overall **ESG elements**.
- The plan will consist of the ESG activities for the Ladysmith Plant, warehouses and Head Office.
- SRSA will share a plan with SRI Sustainability committee upon completion.



- Implementation of a 5-year plan in phases
- Monitoring and reporting monthly internally
- Reporting on the progress quarterly on Social and Ethics committee, Board and SRI.

Although CSI / Socio Economic Development holds many perceived business benefits, it primarily aims to improve the living conditions of communities, and enhance or, at the very least, maintain the quality of their environment. SRSA shall continue to improve in this aspect.



SUMITOMO RUBBER
SOUTH AFRICA

▶ THANK YOU